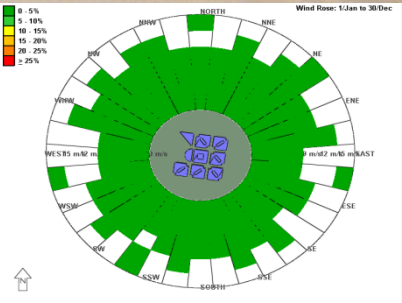
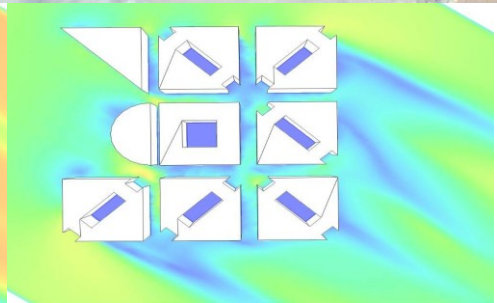
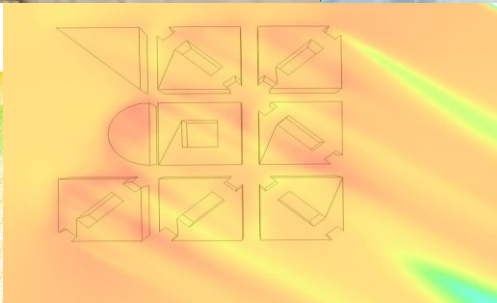
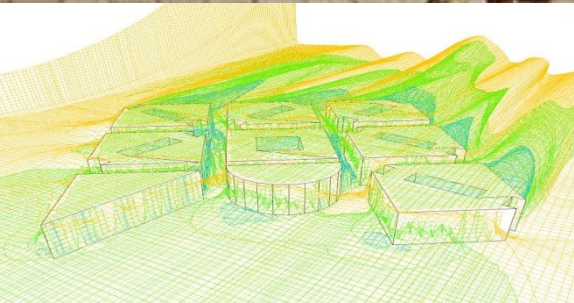


The image shows a desert environment. In the background, there is a large, light-brown, textured wall or structure, possibly made of mud-brick or a similar material. The wall has several small, dark, rectangular openings or windows. In the foreground, there is a yellow, curved object, possibly a piece of fabric or a small structure, lying on the ground. The ground is sandy and uneven. The text "Qatar Military Hospital" and "Culture & Climate" is overlaid on the right side of the image in red.

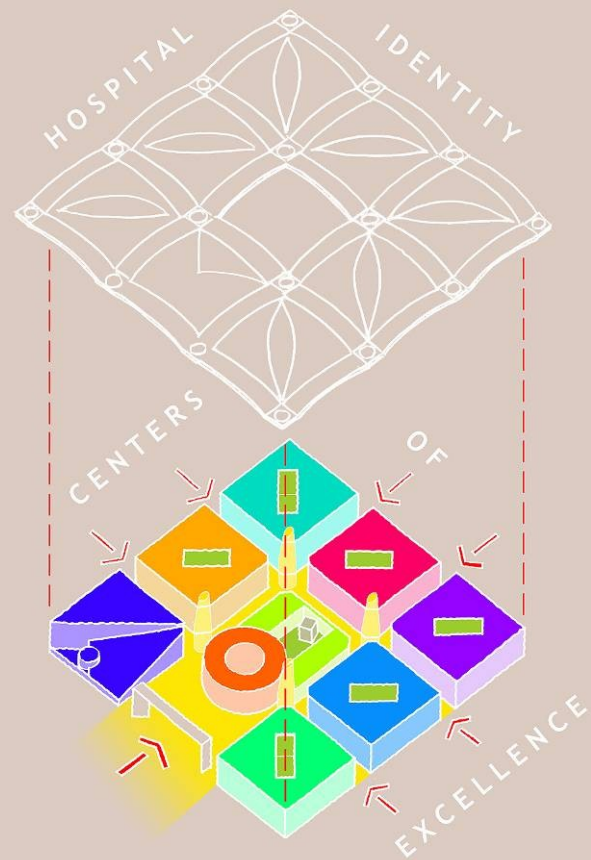
Qatar Military Hospital

Culture & Climate

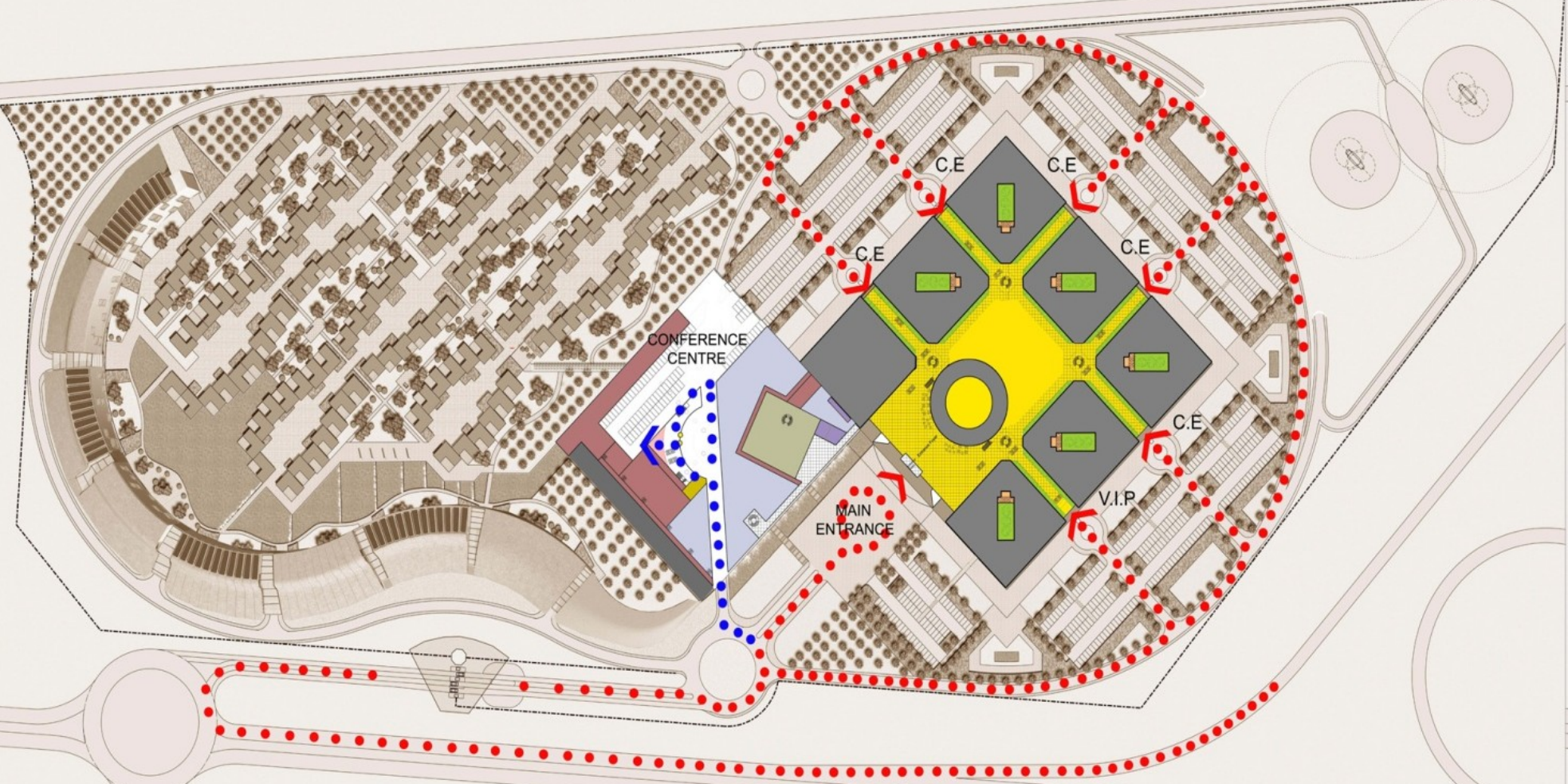


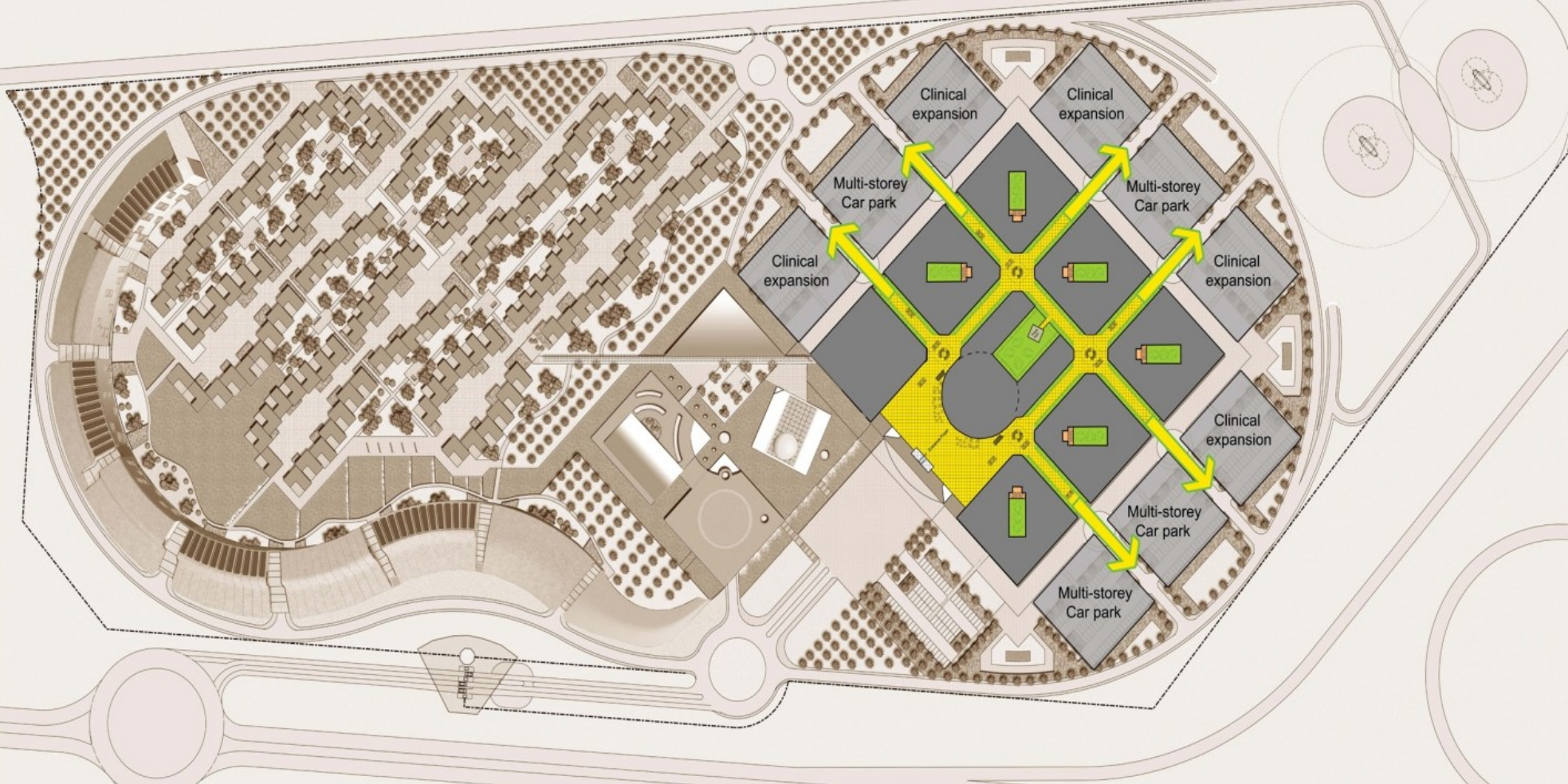
“An Islamic building does not automatically reveal, by its form, the function it serves... but is in most cases an abstract and ‘perfect’ scheme that can be used for a great variety of functions.”

from ‘What is Islamic Architecture?’ by ERNST GRUBE

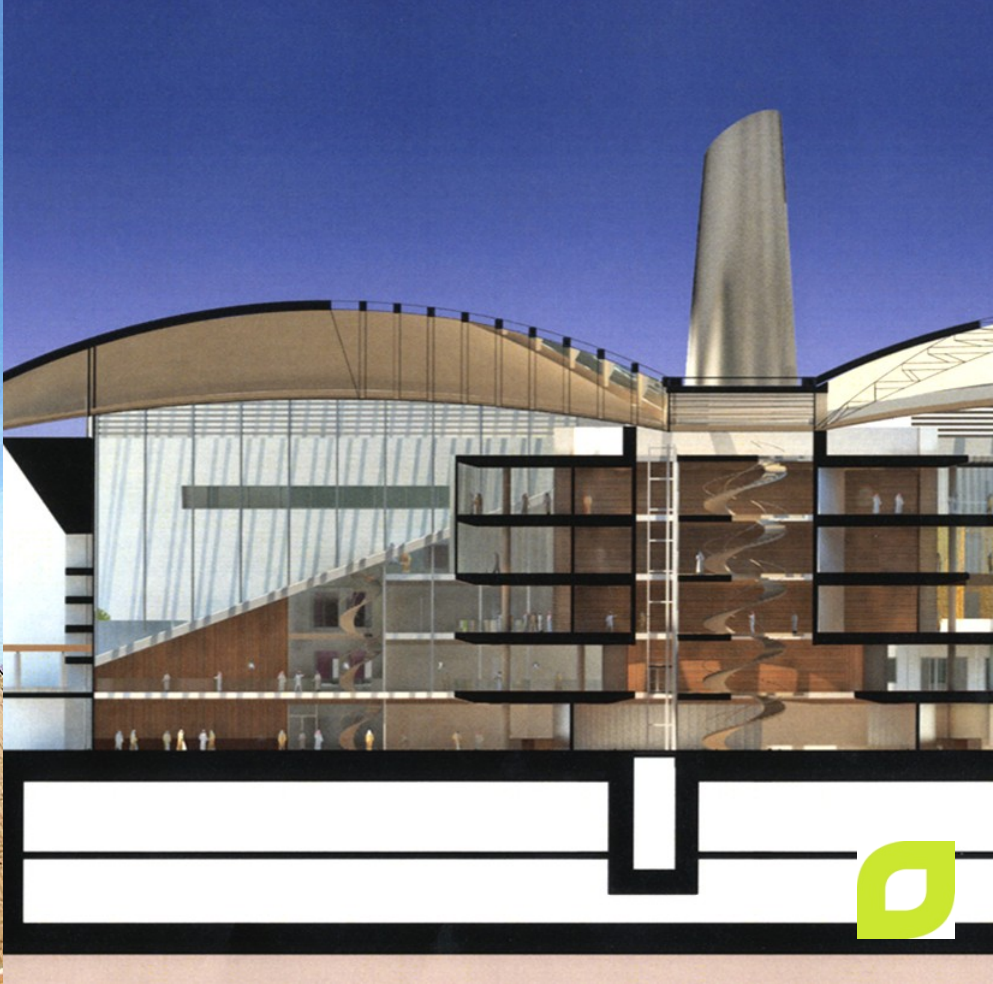


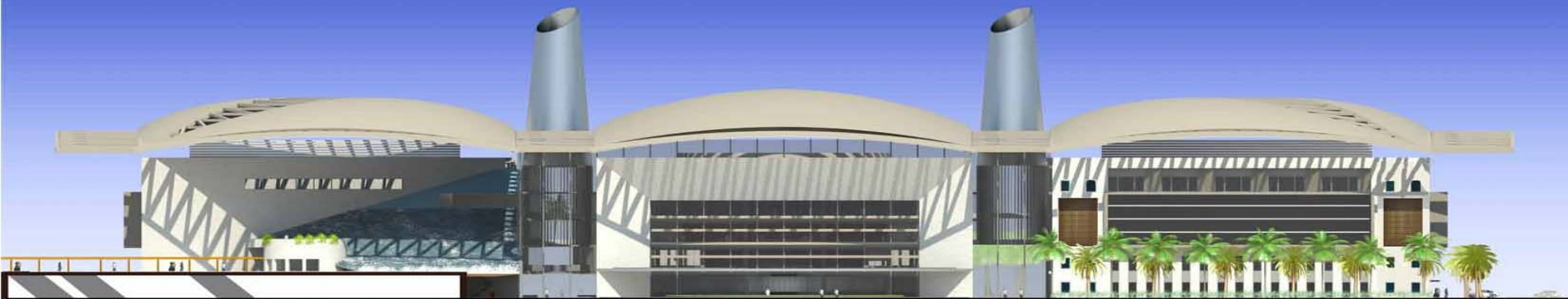








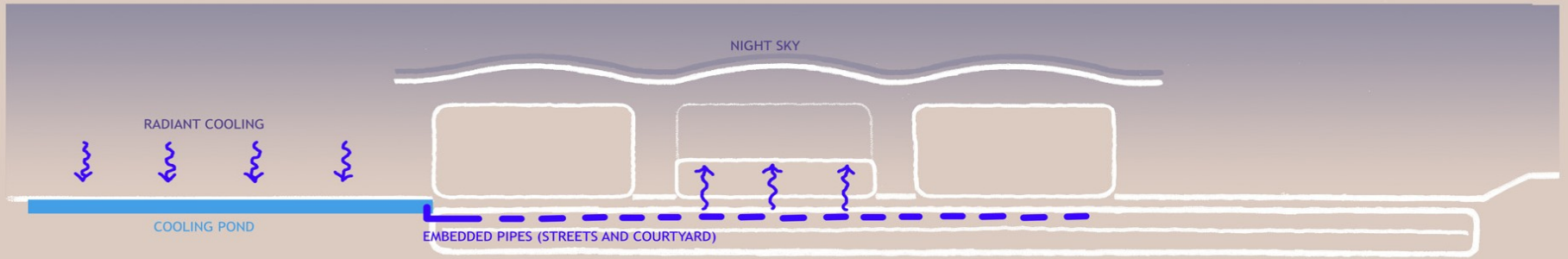




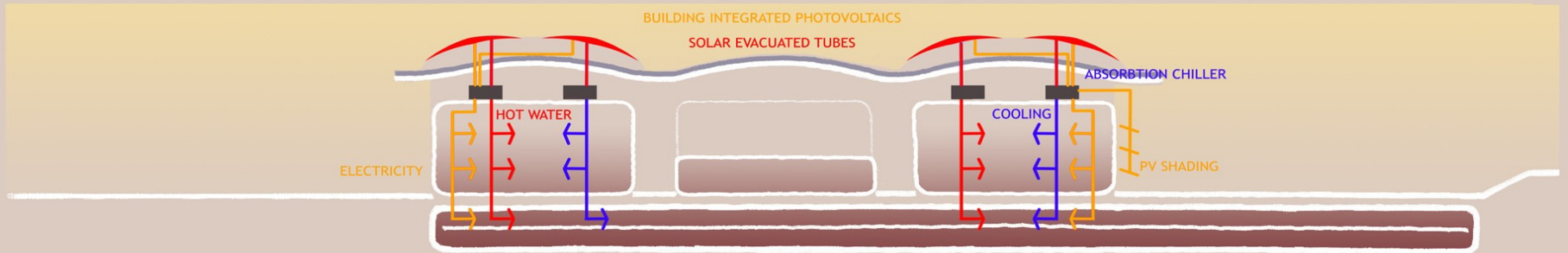
MAIN ENTRANCE ELEVATION LOOKING EAST



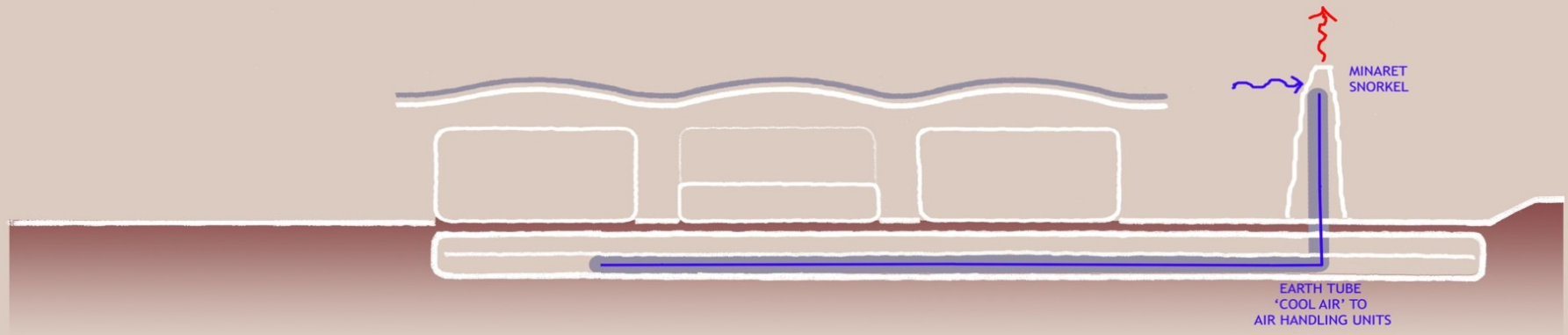
TYPICAL CENTERS OF EXCELLENCE ELEVATION



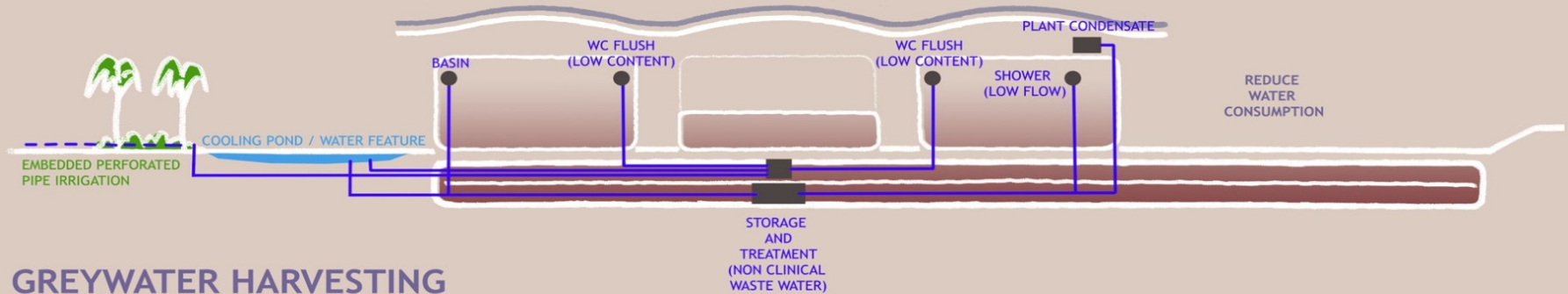
NIGHT SKY COOLING (ACTIVATED THERMAL MASS)



SOLAR THERMAL (COOLING AND HOT WATER) AND SOLAR POWER (ELECTRICITY)



GROUND SOURCE COOLING - EARTH TUBES



GREYWATER HARVESTING





