

# *Creating Successful Places*

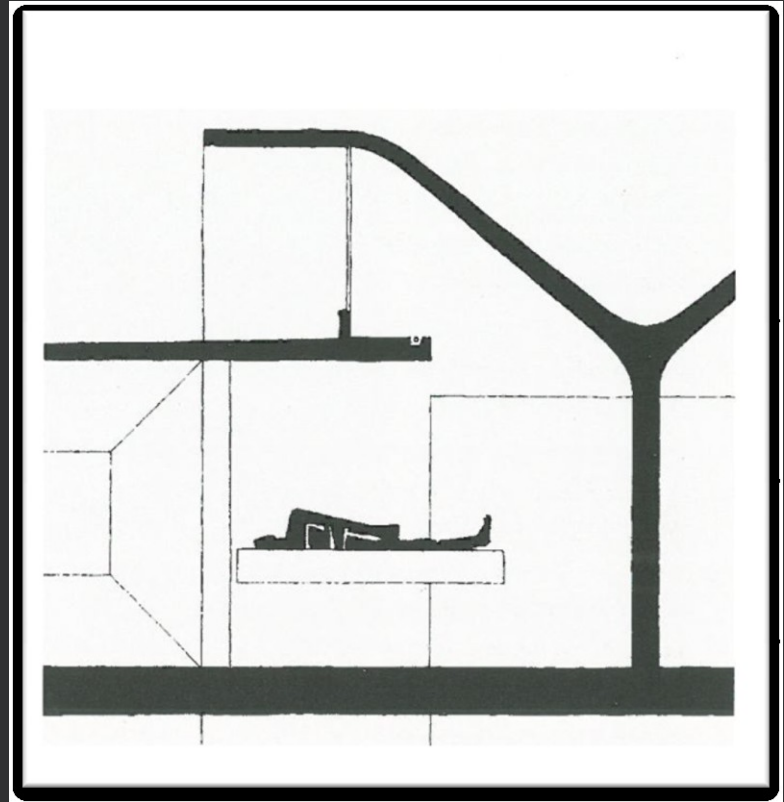
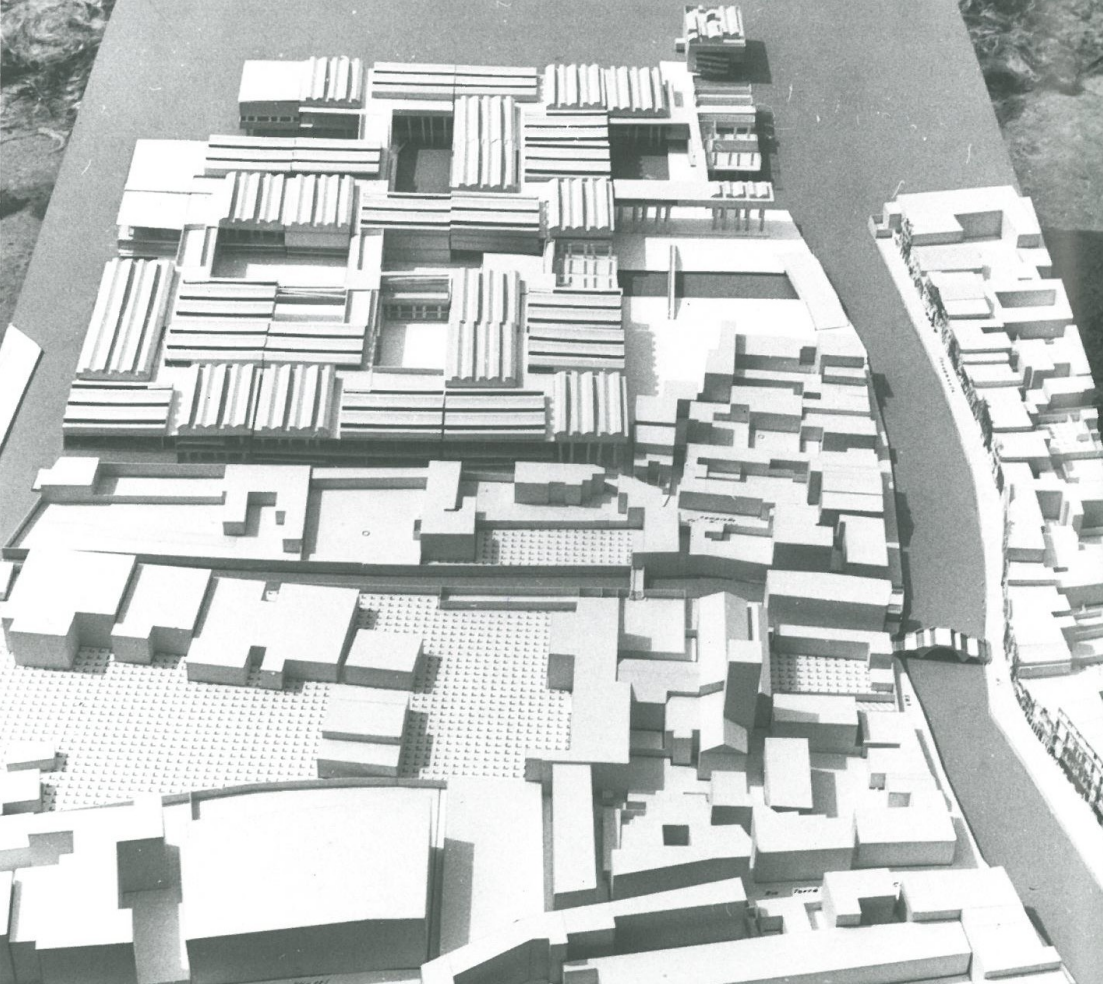


EuHPN Bologna, 12 October 2011

*Benedict Zucchi* **BDP.**





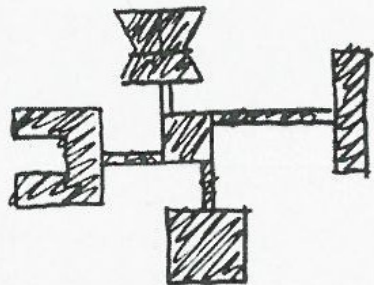


# Specific

## versus

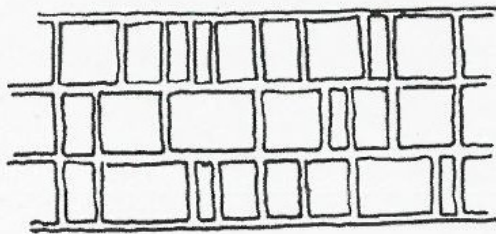
# Generic

- ⑥ The external expression of differences in function (are these as important as the similarities?) and nostalgia for representative form also tend to segregate the university into specialized disciplines only.



DISSOCIATION

- ⑦ We seek rather a system giving the minimum organisation necessary to an association of disciplines. The specific natures of different functions are accommodated within a general framework which expresses university.



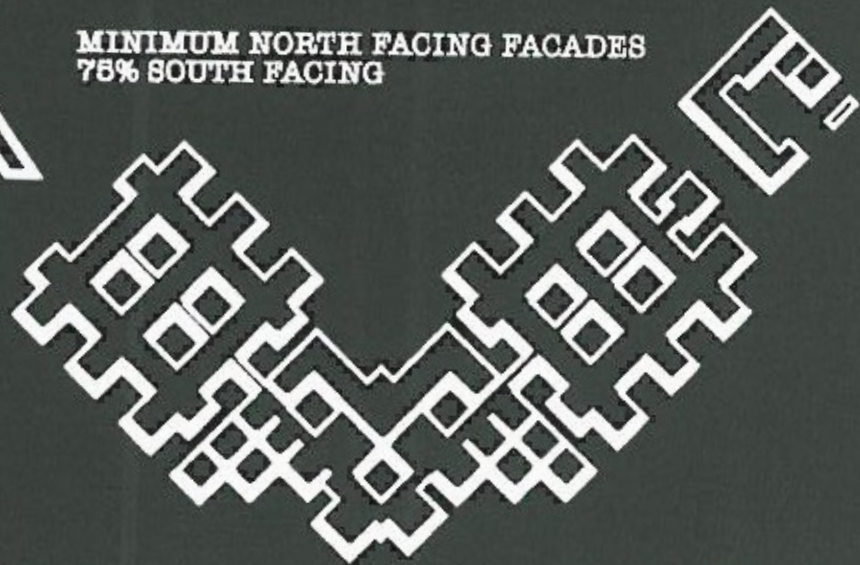
ASSOCIATION





N

MINIMUM NORTH FACING FACADES  
75% SOUTH FACING



CENTRAL CORE MAXIMISES SOUTH FACING FACADES













# after less than 50 years

- **Asbestos waste cleared** 6,200 tonnes
- **Recycled aggregate prod.** 120,000 tonnes
- **Deleterious waste disposal** 2,100 tonnes
- **Reclaimed materials** 14,000 tonnes

So what is key to longevity ?



# Guy's Hospital, London

## *Re-use & Regeneration*



# SITE ANALYSIS

- Changing Urban Context
- Poor quality & conditions of buildings
- Poor way-finding & identity
- Concealed main entrance





# HISTORIC ROUTES

OS Map 1894

- Sparrick's Row, Great Maze Pond, St Thomas' Street and Snowfields link the site to the wider urban context;
- Historic routes encourage North to South and East to West pedestrian flows;
- The scale of the footprint fits the surrounding urban grain.



# IDENTITY & IMAGE



**Approach from London  
Bridge Station:**  
Concealed entrance



**Main Entrance:**  
Adhoc entrance and image  
No Greenery or Public Space

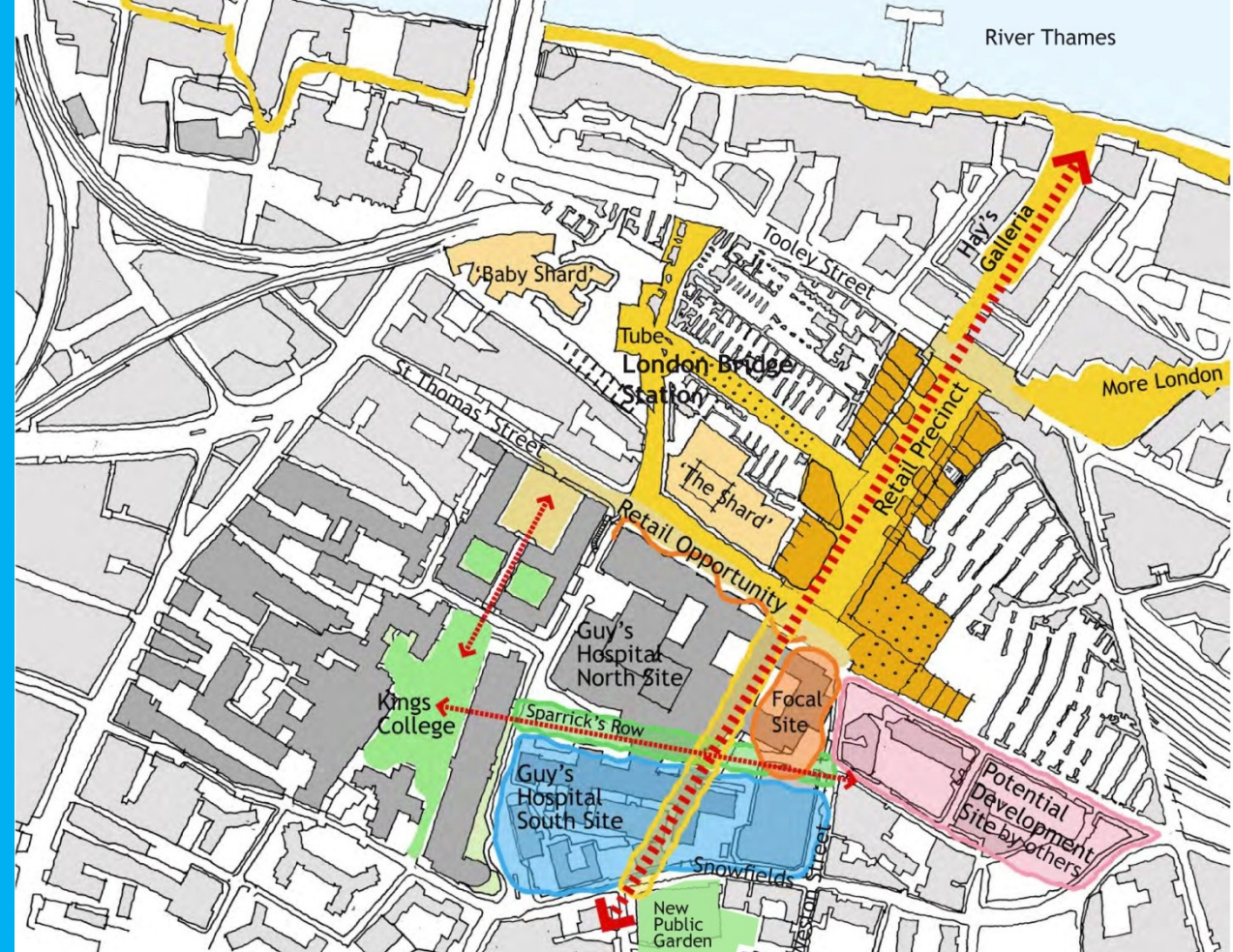


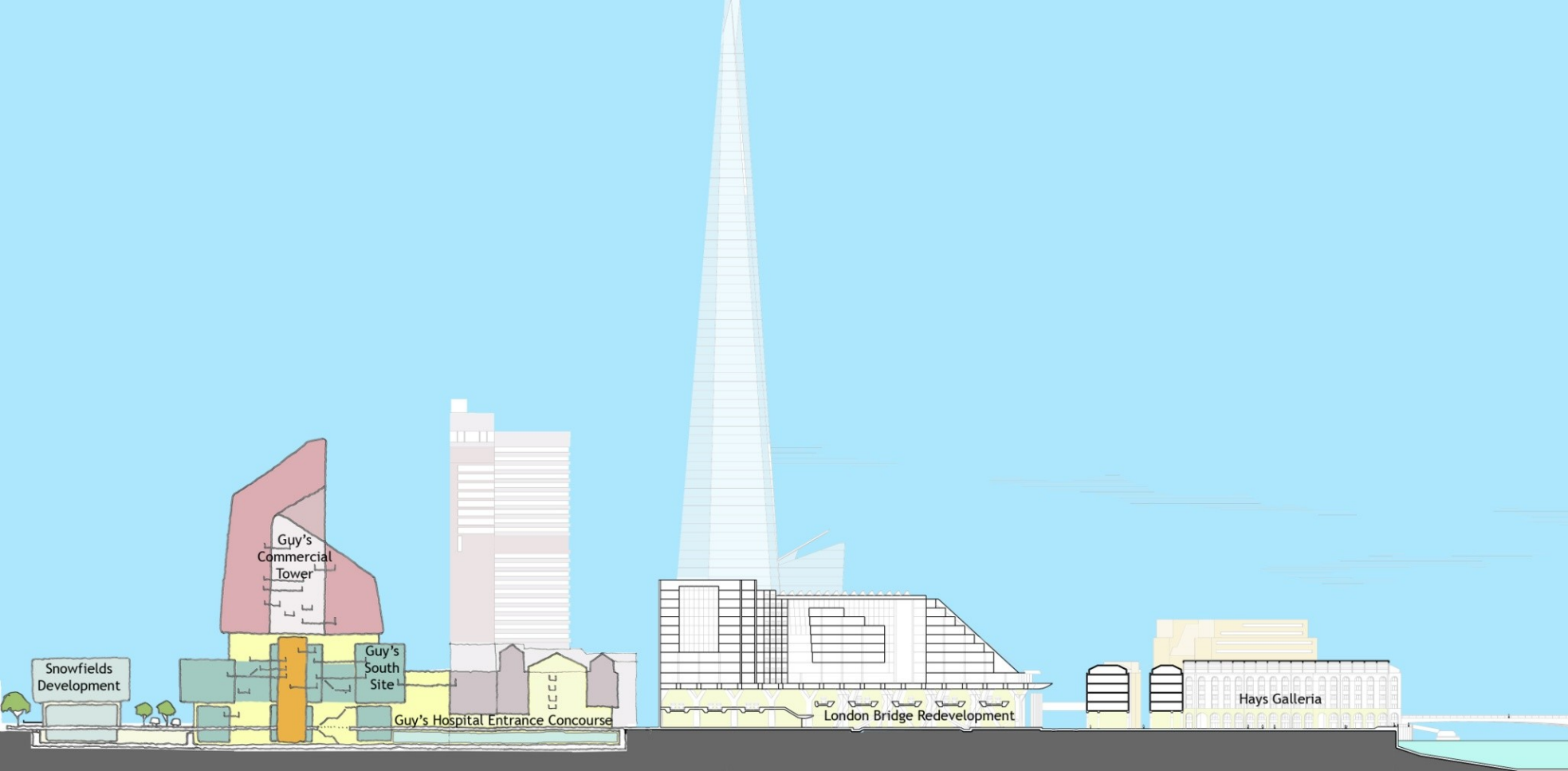
**Great Maze Pond:**  
Back of House/Service Yard



# STRATEGIC LINKS

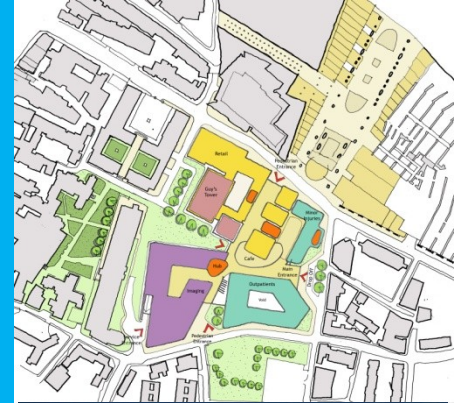
- North/South Concourse
- East/West Route
- Activate St Thomas' Street
- Gardens







# SHORT LIST OPTIONS



Option 1 : The Tower



Option 2: The Arc



Option 3: The Petal



