

Case study RIJNSTATE Hospital ARNHEM the Netherlands

European Health Property Network 2014 Workshop

*Thinking differently about healthcare buildings:
innovative infrastructure planning and design to improve the quality and safety of care*



Willem-Jan Hanegraaf





Rijnstate



Total energy consumption 2013

Gas: 4.660.000 m³

Electricity: 15.400.000 kWh

Water: 140.000 m³

Total costs: € 4.000.000,-





Photo Voltaic panels





Rijnstate hospitals life case in Streamer project



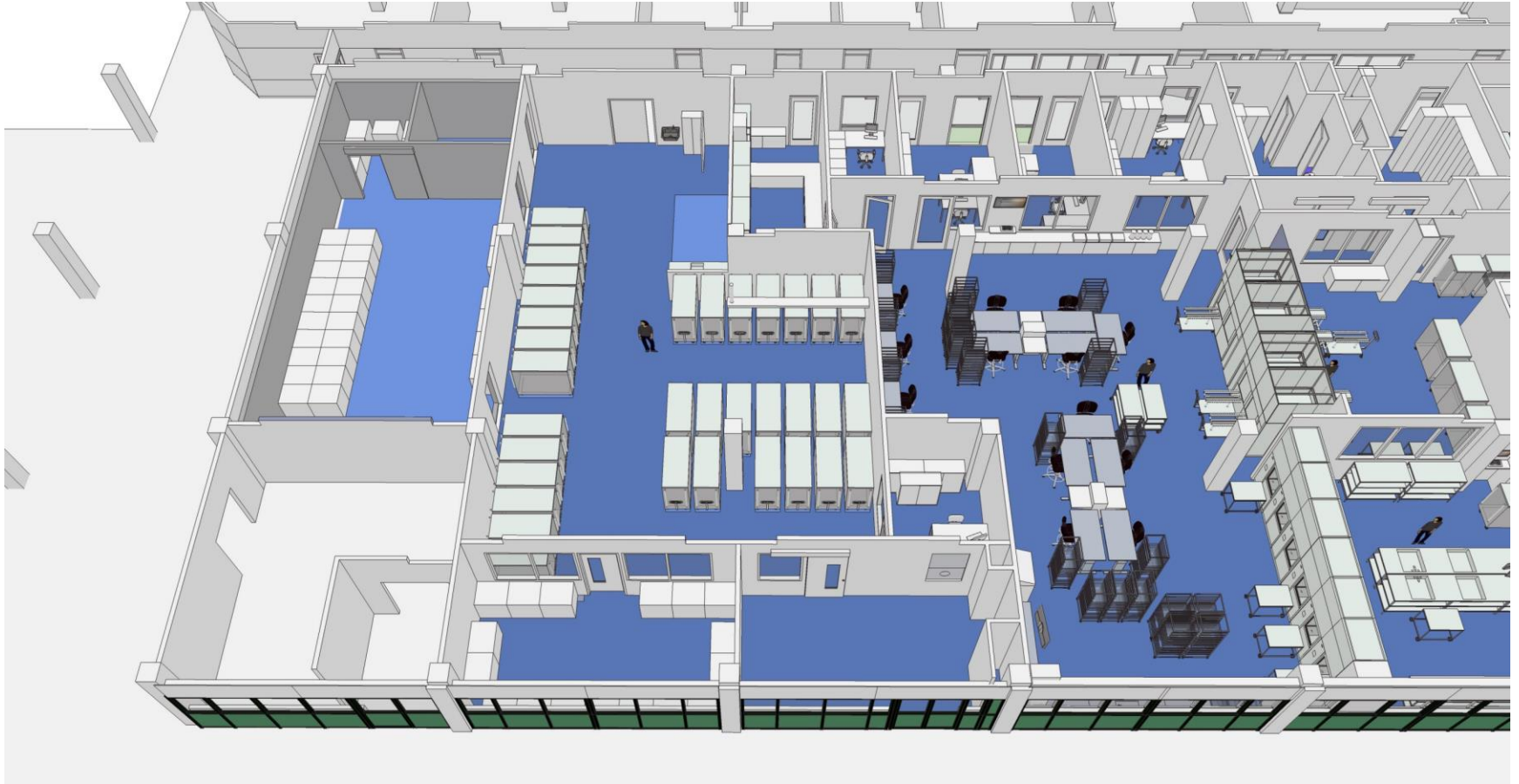








Central sterile services department





Holy **BIM** Water

For hospital entrepreneurs



Rijnstate



Buy Now

