





# INTEGRATED PALLIATIVE HOME ENVIRONMENT

**Builder:** CODA not-for-profit organisation

**Design team:** noAarchitecten



# Building program

Renovation or new build of a palliative center with a hospice (8 units), a low care center, a day care center (5 units) en a center of expertise.

1. Center of expertise Palliative Care (= regional service center)
  - Network Palliative Care Noorderkempen
  - Multidisciplinary support team
  - Walk-in home
  - CODA bereavement care
2. Collective day care for palliative patients (collective autonomous day care)
3. Palliative day care center
4. Low care palliative units (2 units housing and care center and 3 units short stay center)
5. Hospice (8 Sp-units General Hospital Klina)



# Characteristics

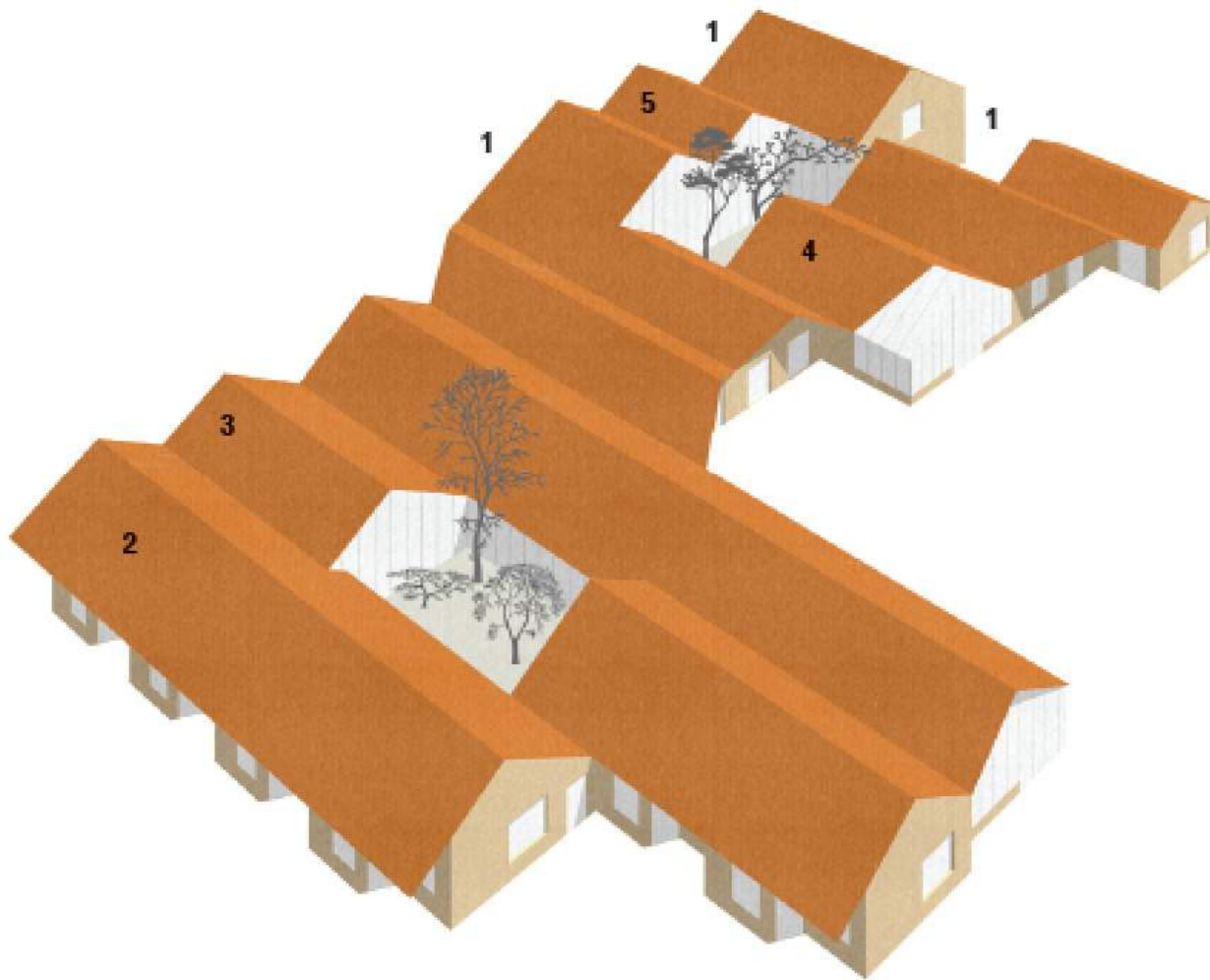
- Offer extramural palliative care in a comforting home environment
- Centralise the continuum of palliative care
- Architectural focus on experience, use and comfort





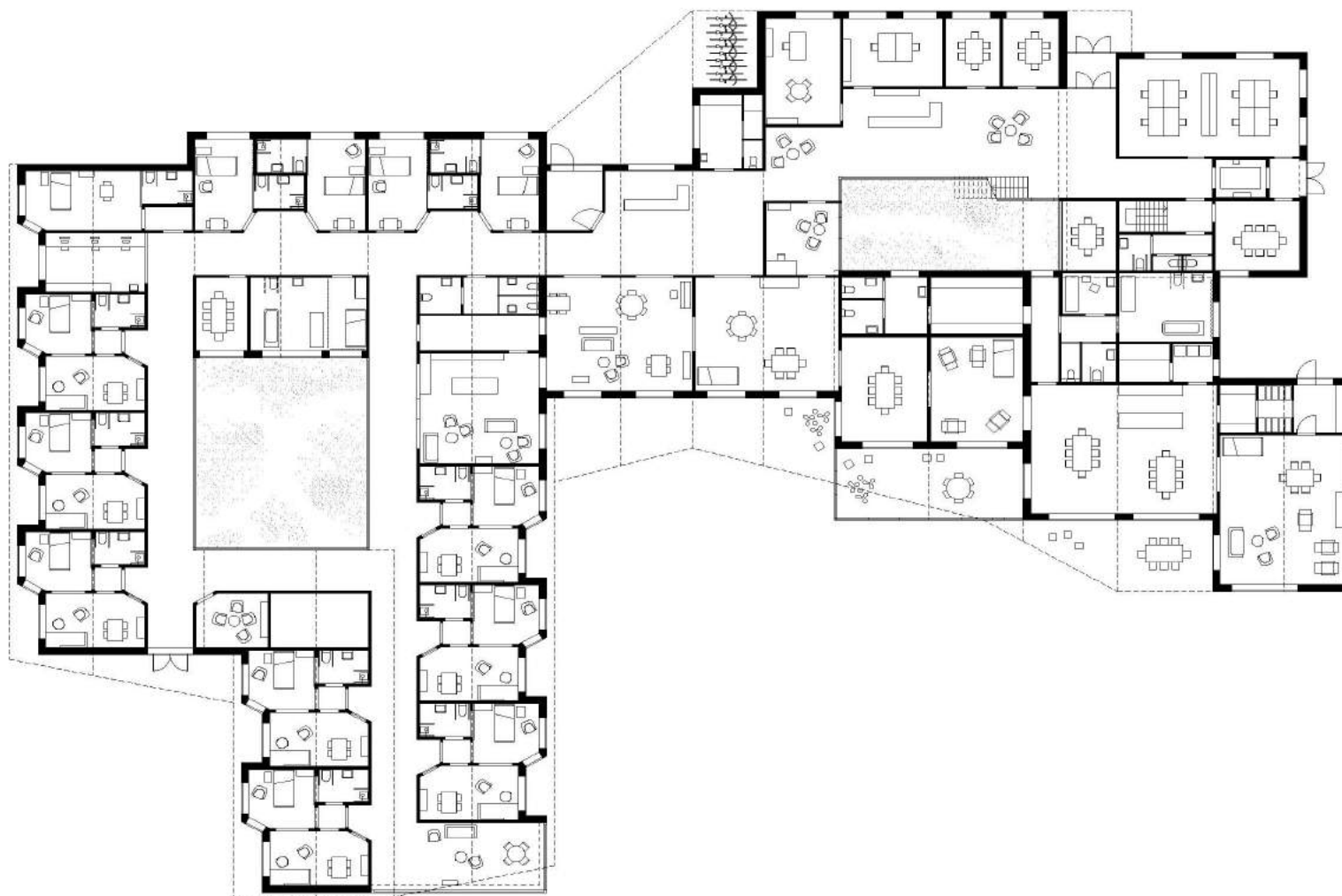


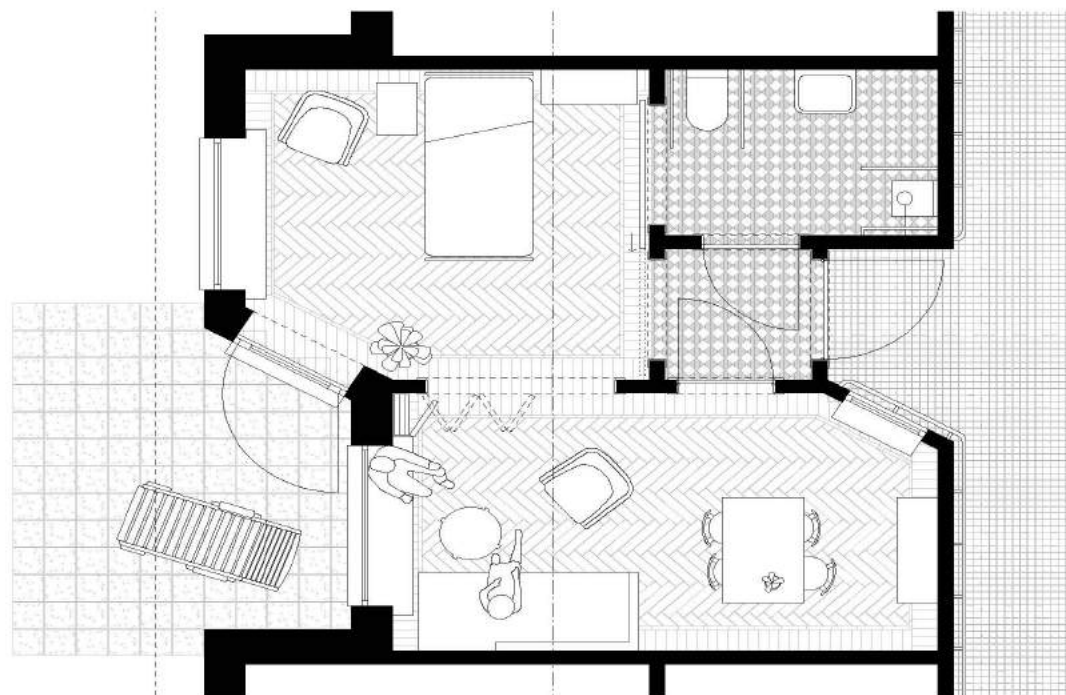




1. Entrances
2. Hospice
3. Low Care
4. Day care center
5. Center of expertise  
Palliative Care

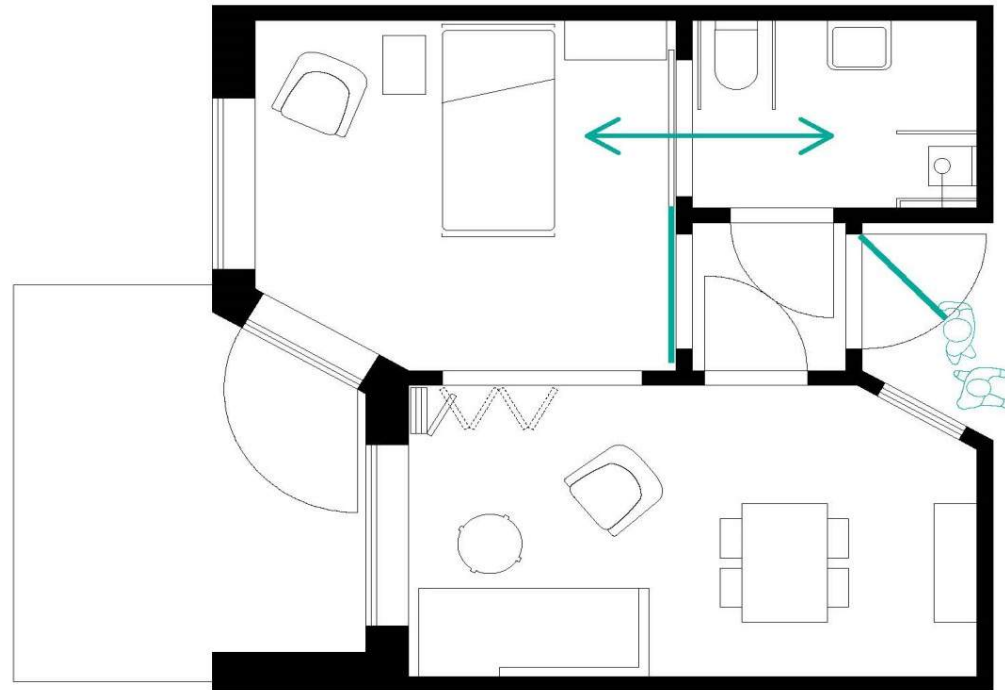


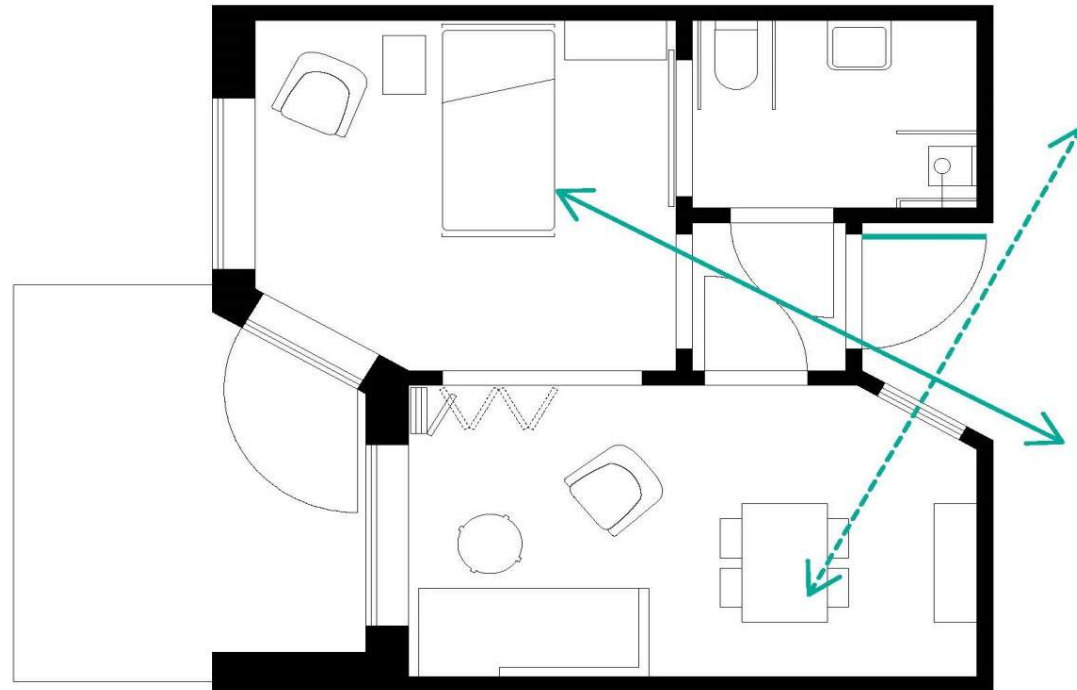




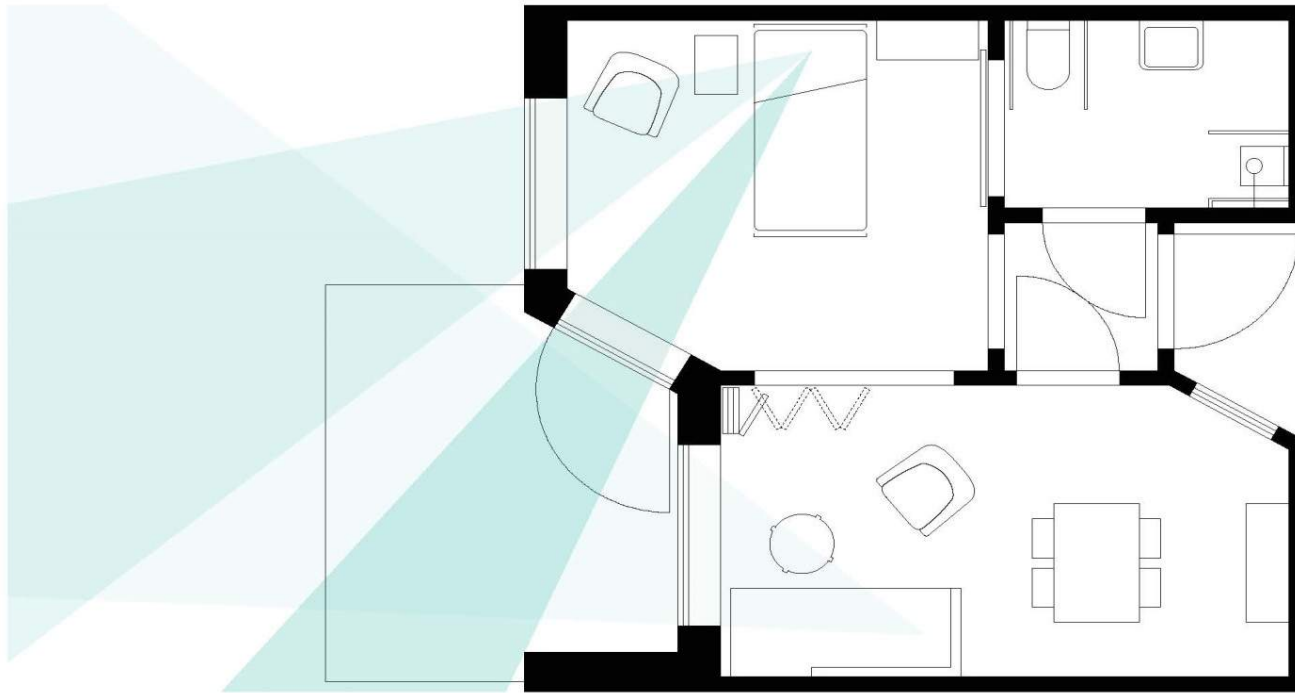
Wuustwezel –gastenkamer hospice

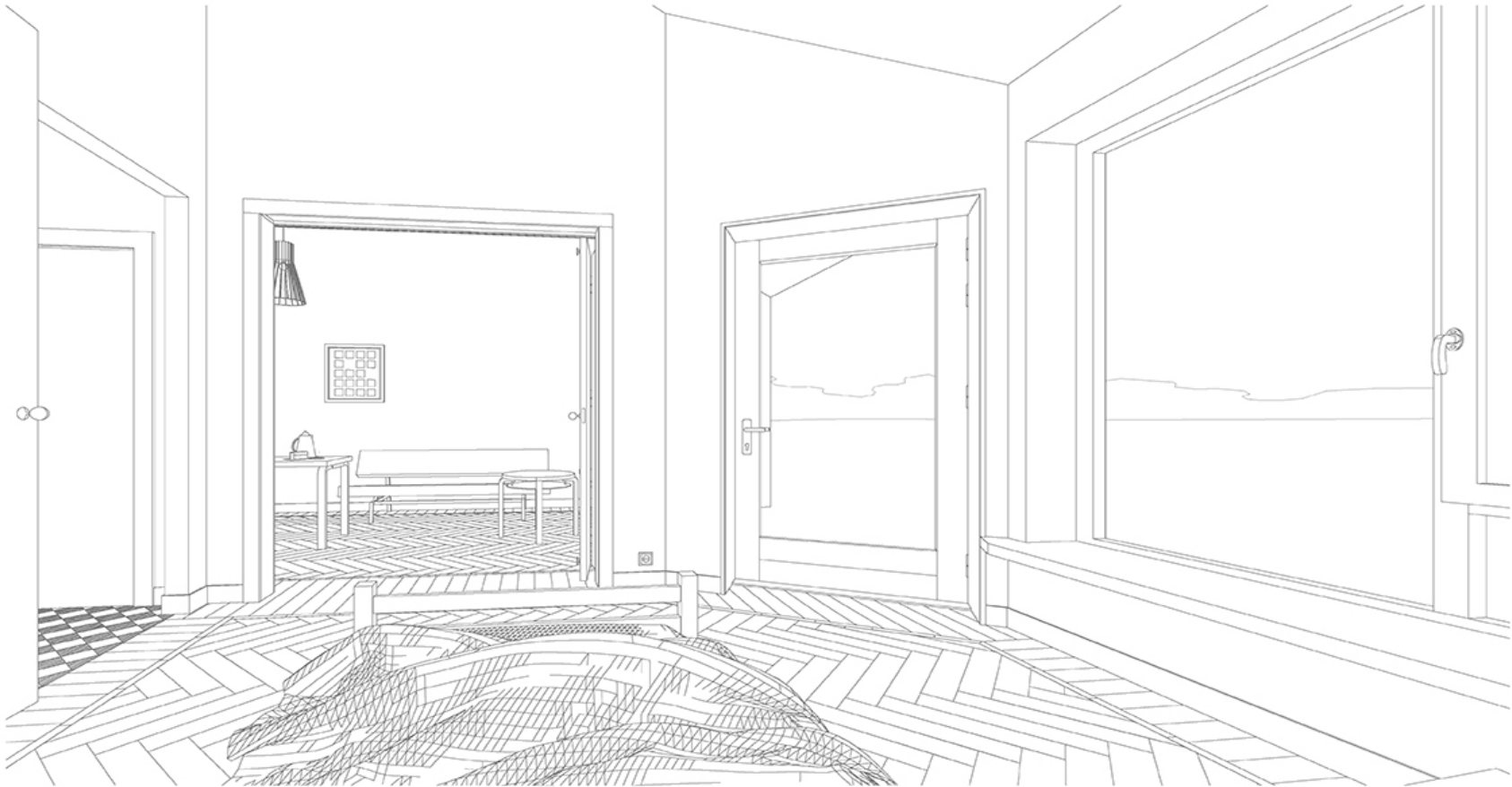






















# AGEING-IN-PLACE' LIVING WITHOUT GOVERNMENT SUBSIDIES

PILOT PROJECTS  
New spatial concepts of care

5 PILOT PROJECTS

project 1 / project 2 / project 3 / project 4 / project 5



# Building Program

- 190 care flats with one or two bedrooms, whereof 90 intensive care-units
- 30 homes for MPI-Oosterlo (disabled persons)
- Community center with public services

# Characteristics

- Decompartmentalisation: no distinction between elderly people, disabled people or people with mental disability
- Committed to affordable and 'ageing-in-place' living
- Affordable care for residents
- Integration of informal care, home care, intramural care
- Investigation of building without subsidies

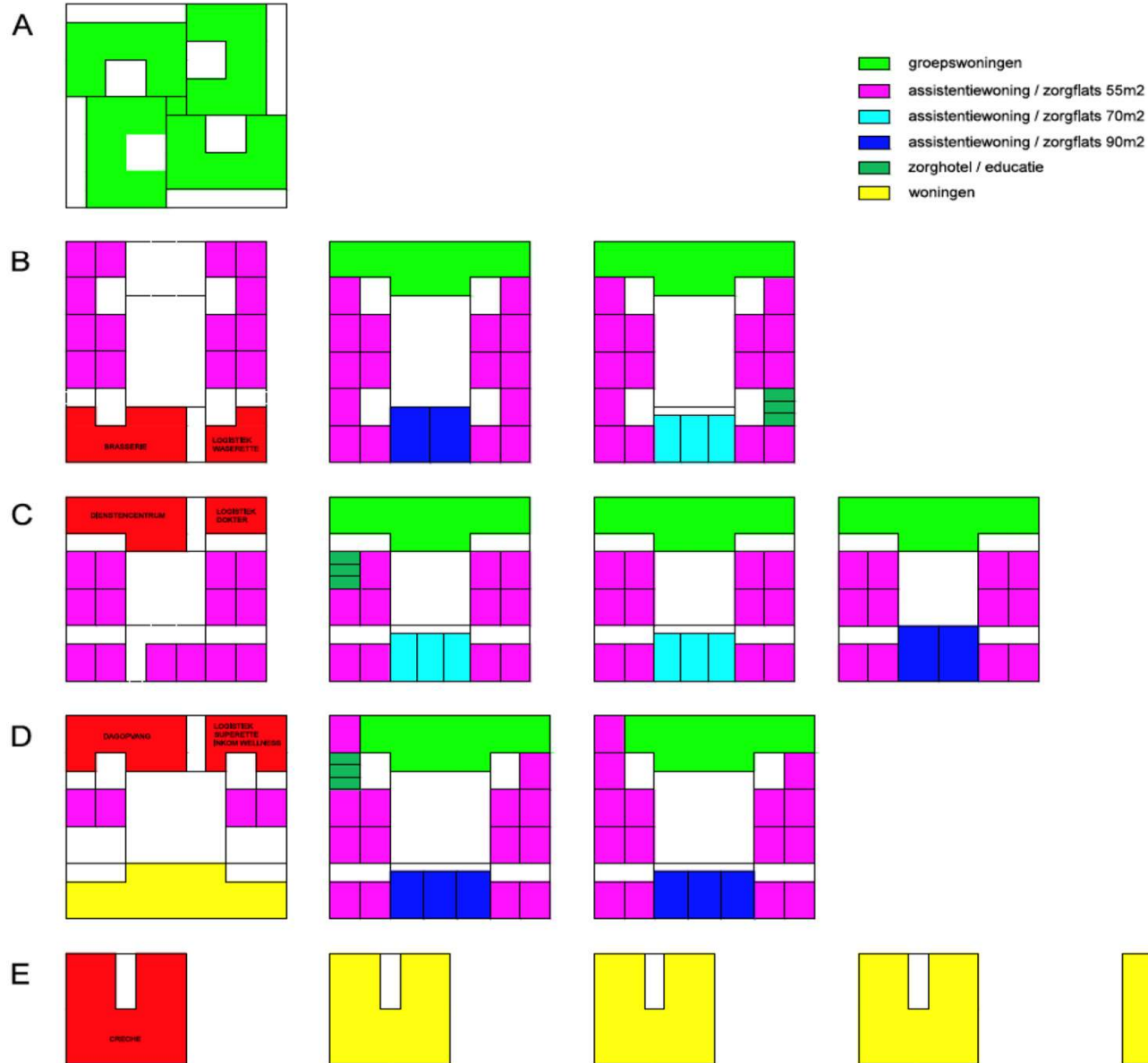










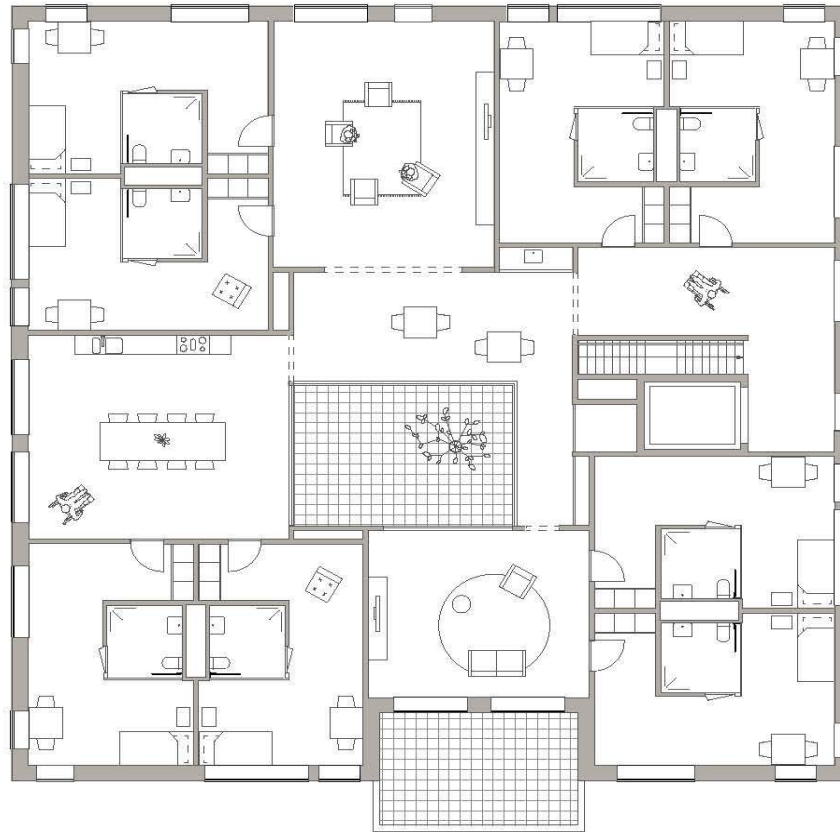




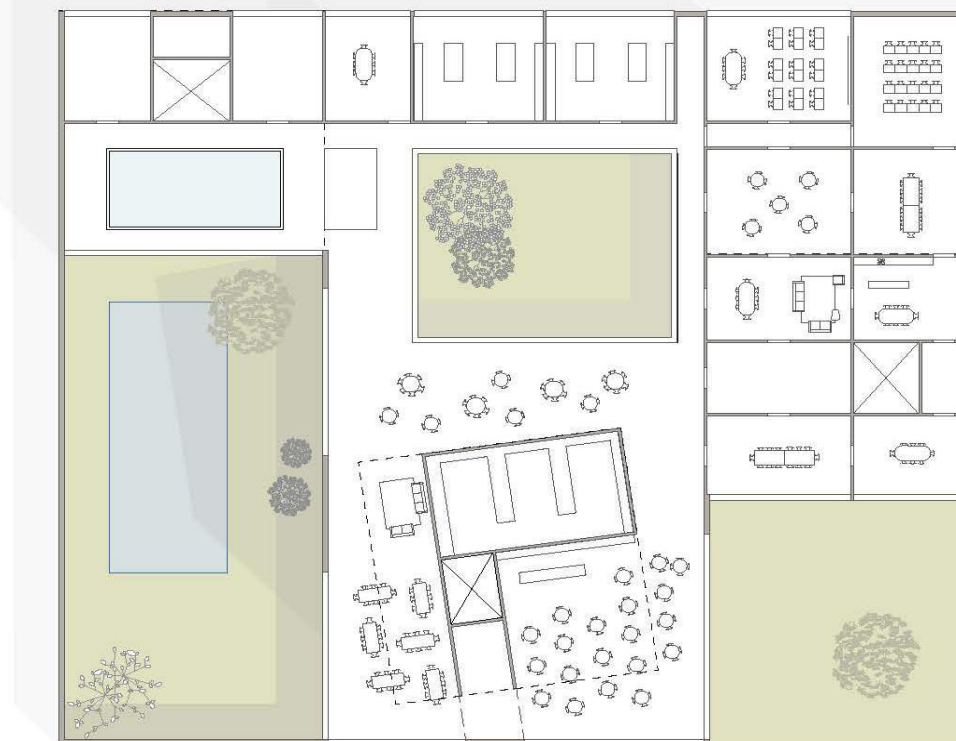




Geel – careflat / 56 à 75m<sup>2</sup>



Geel – group housing intensive care



Geel – community center



# Ambitions living/housing en Care

1. Innovate on the level of the city/district/block/building/house
2. Dare to program urban/centrality
  - density
  - nearness
3. Maximize collective character
  - economic – space-efficient
  - facilitate informal care
4. Facilitate resident diversity
  - intergenerational relationships
5. Search for universal quality of living
  - home environment – standerdize
6. Dialogue with private market
  - quality control
  - social awareness