
Carlanderska Hospital

Gothenburg, Sweden

Ulla Antonsson
Roger Johansson

Photos by Bert Leandersson

white

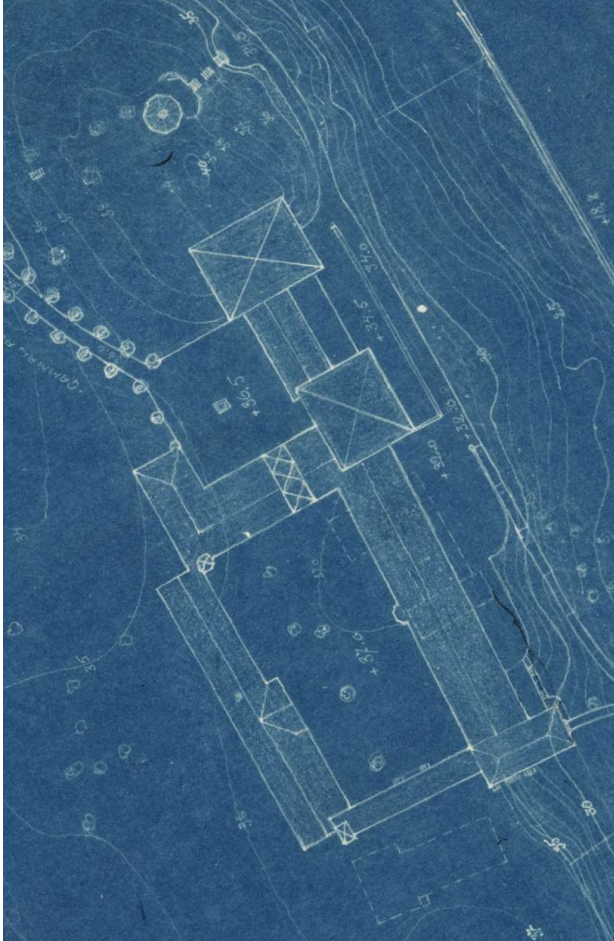




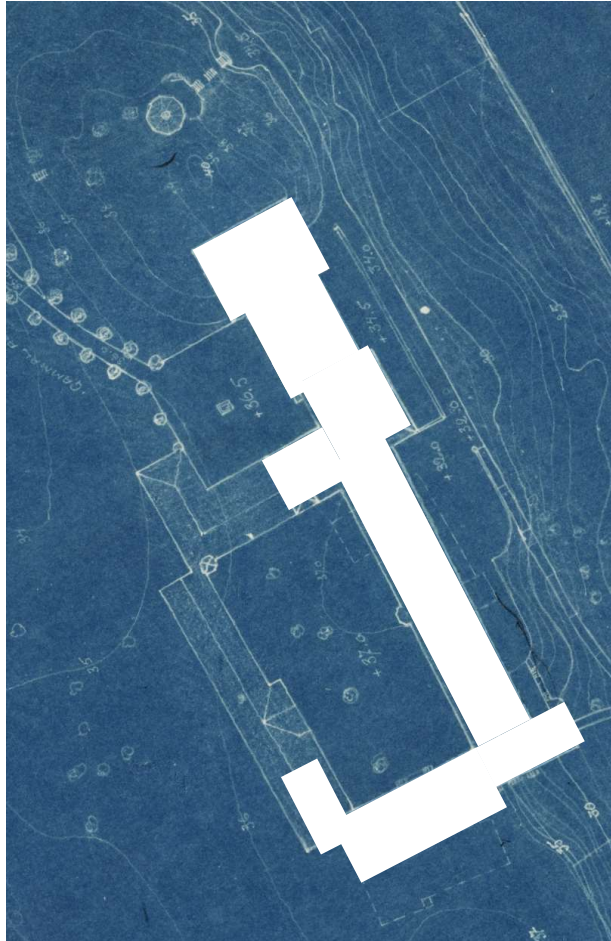








1917



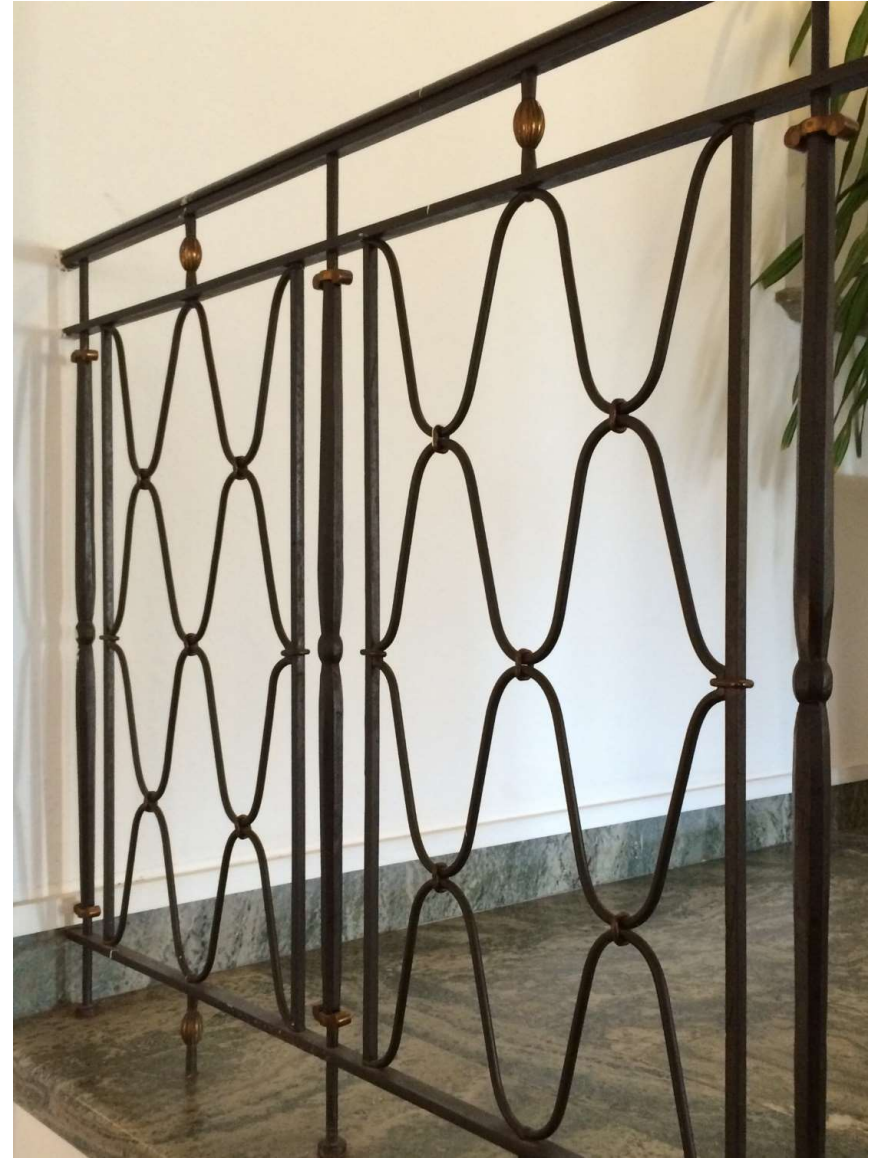
1927



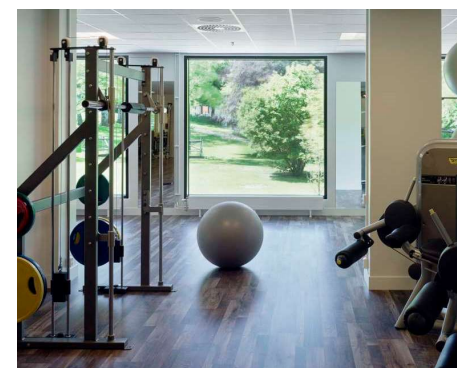
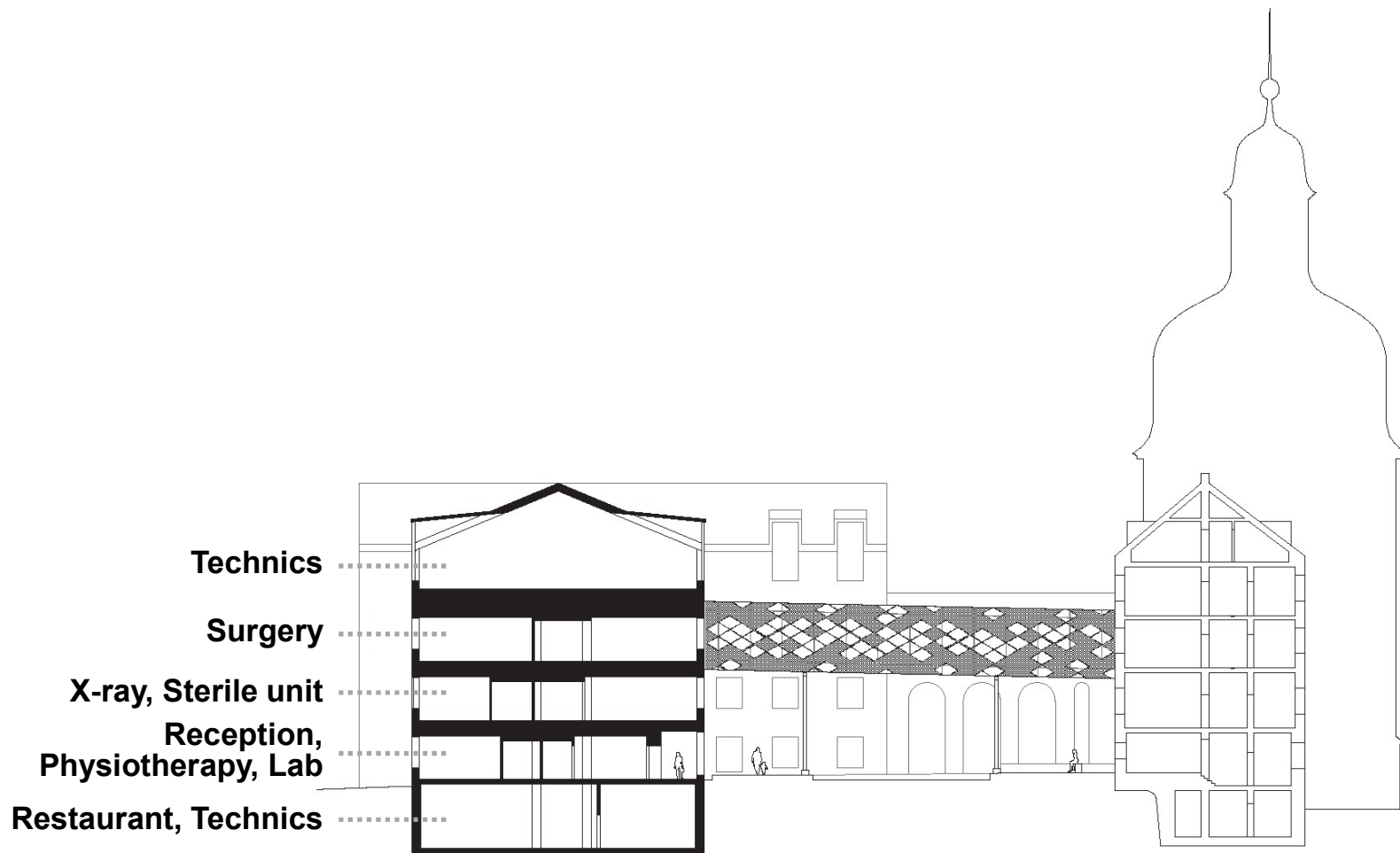
1927, Corbusier
Double House, Weissenhofsiedlung



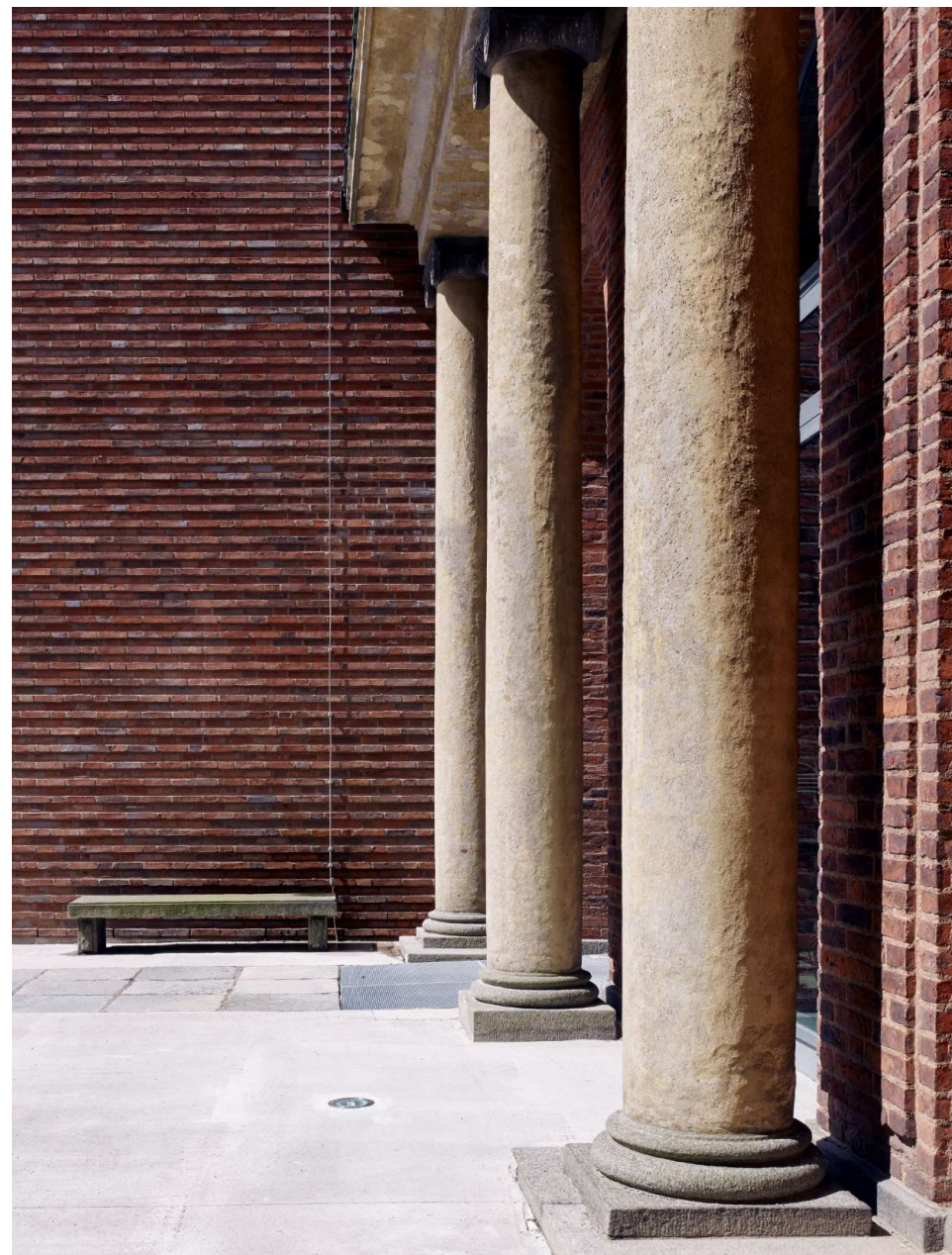
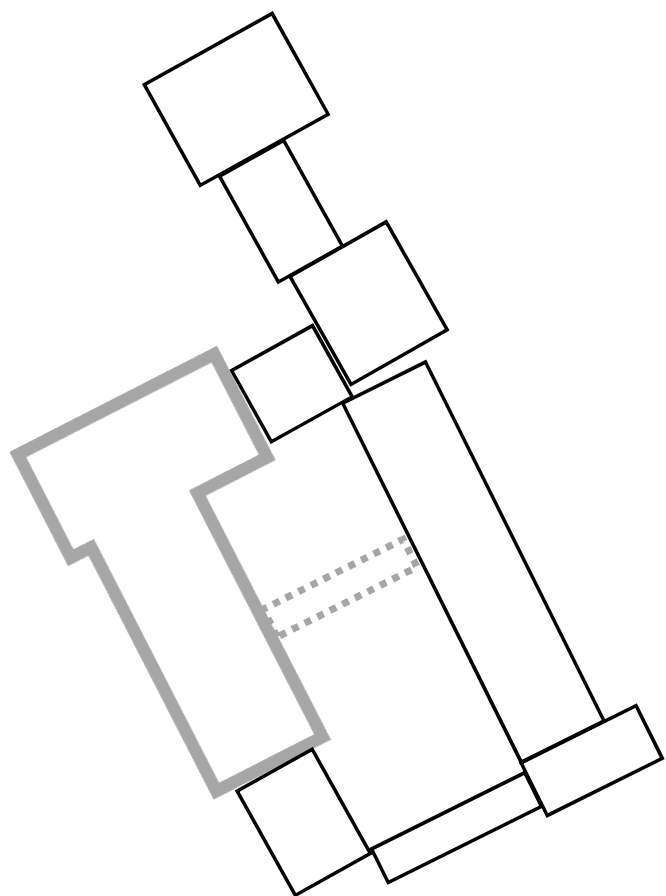




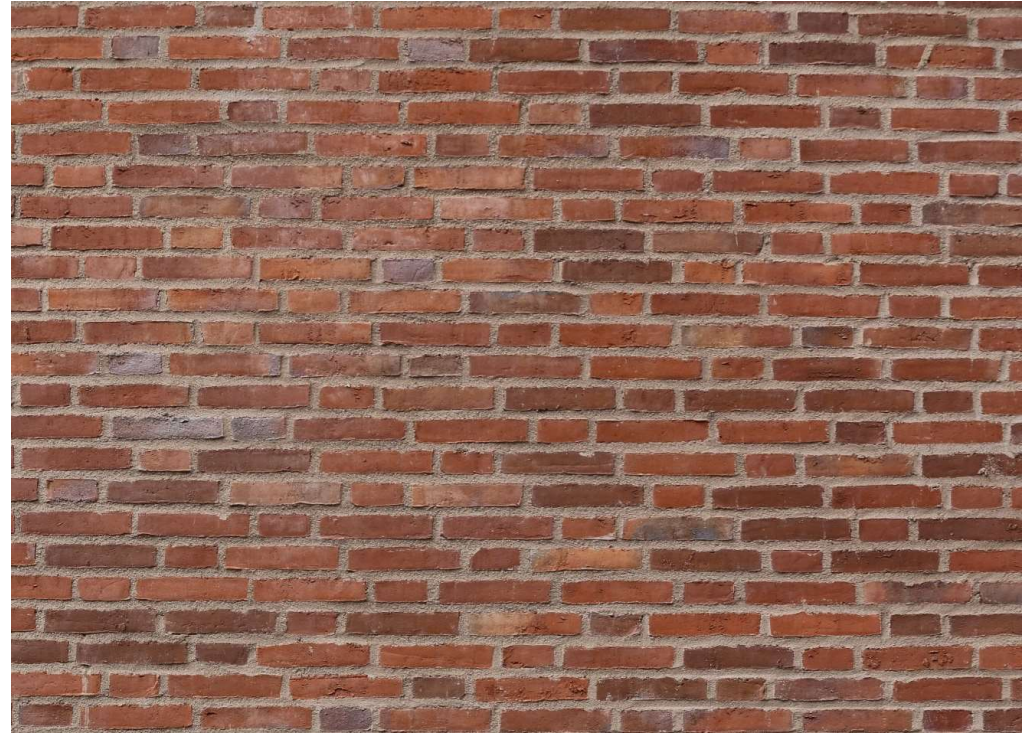
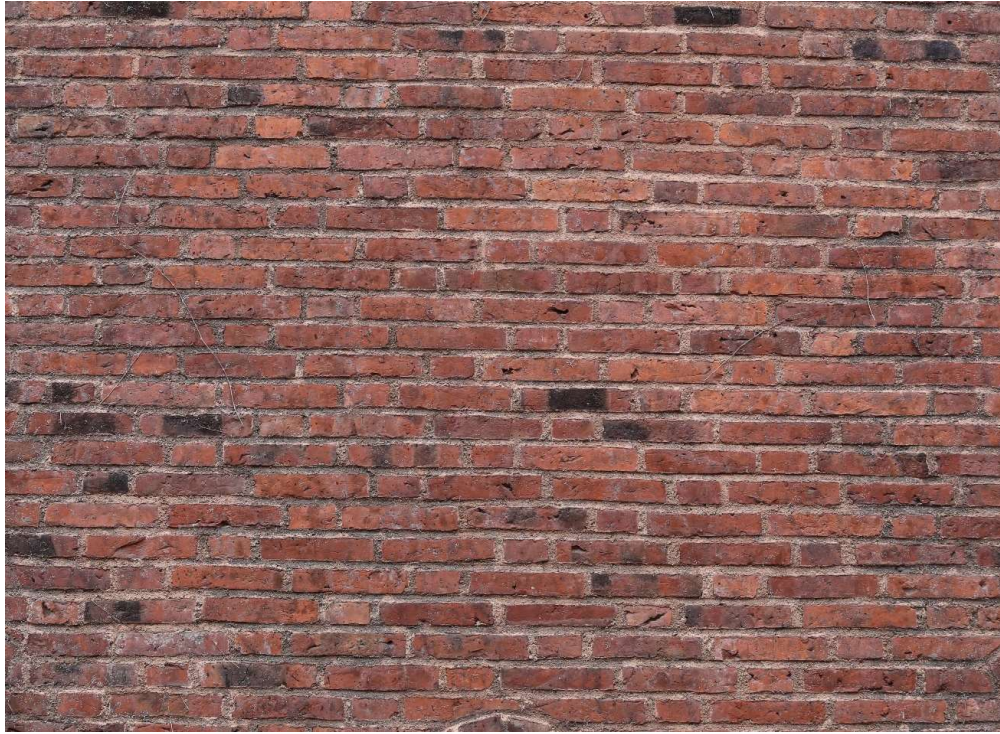


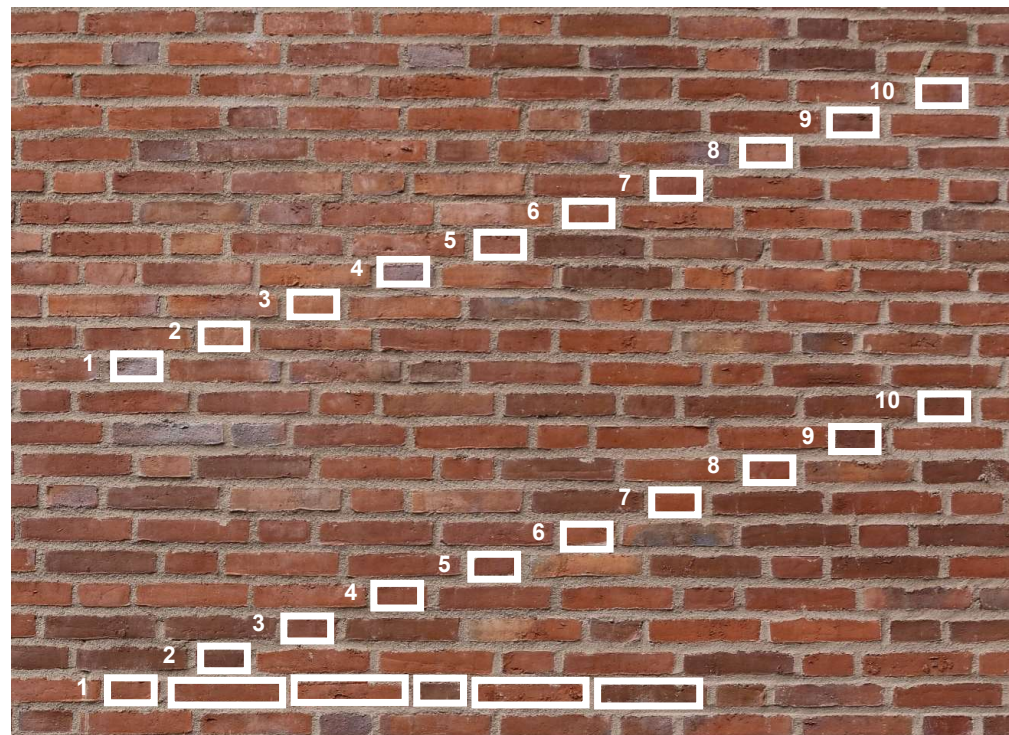
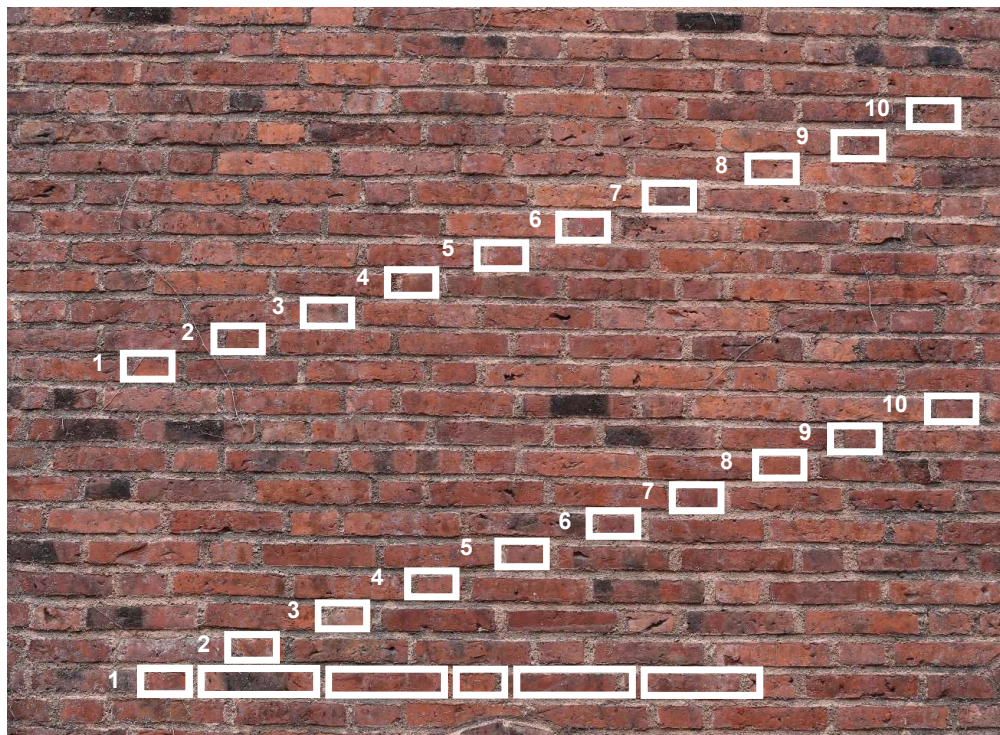
















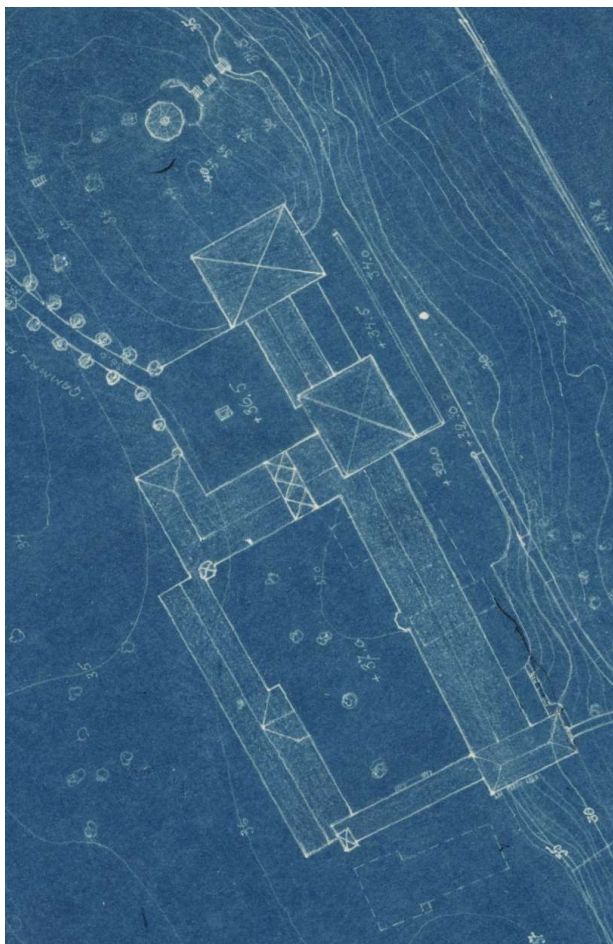
CARLANDERSKA
SJUKHUSET

RESTAURANG

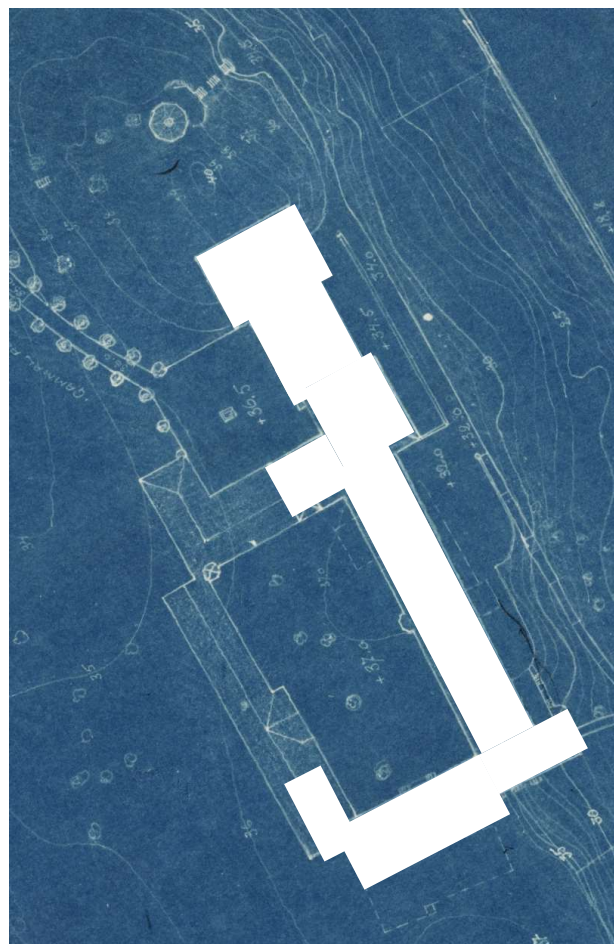




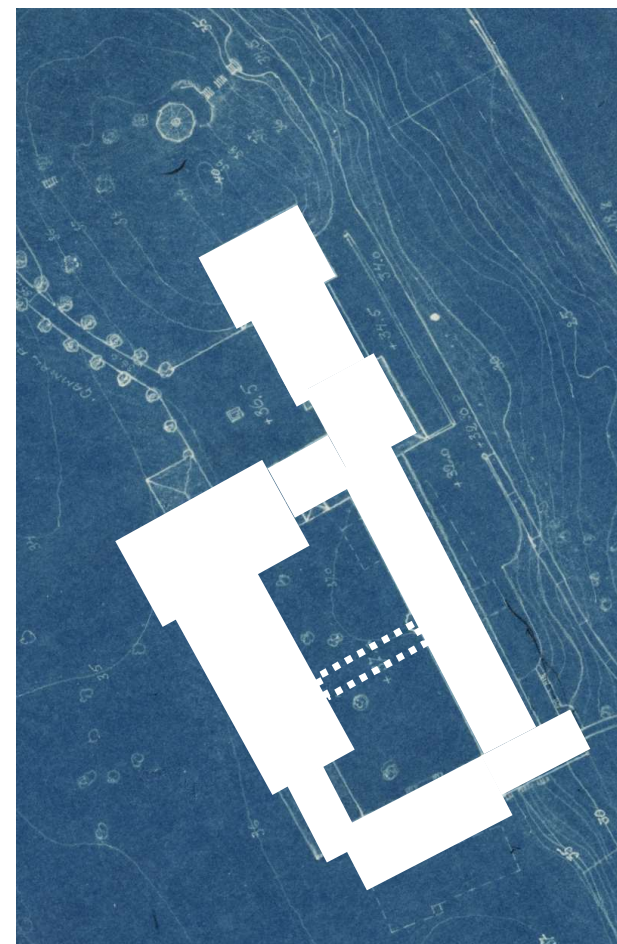




1917



1927



2017



Background

- **Donation**
- **First patient 1927**
- **Non profit foundation**

Carlanderska hospital offers.....

- **small and accessible**
- **elective healthcare**
- **complete chain of healthcare**
- **high level scale of service**
- **area of expertise**
- **modern healthcare - cultural environment**

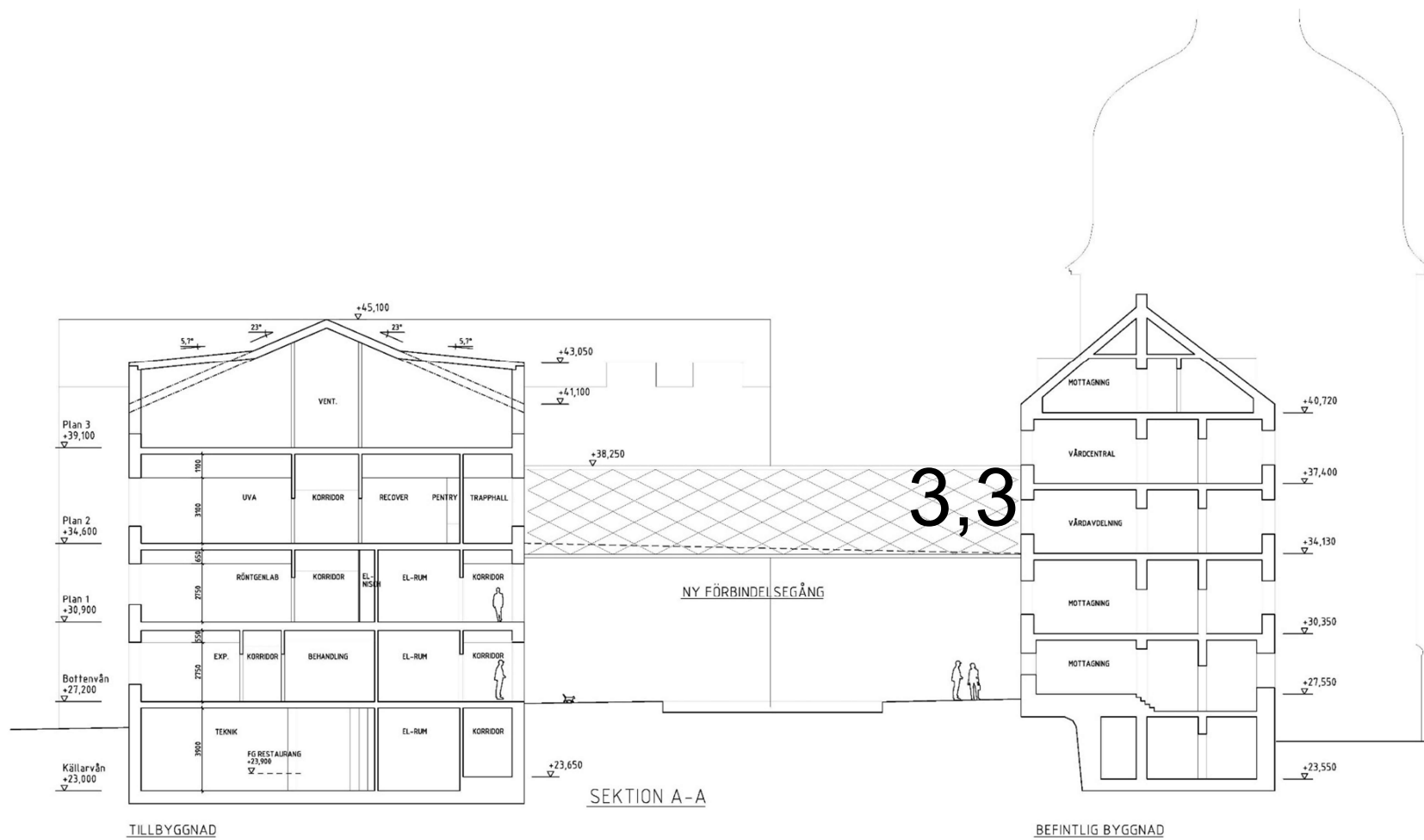
Status before extension

- **Small operating theaters**
- **Limited floorareas in general**
- **Limited possibilities for development**
- **= in need of extension**
- **1927 - 10.000 m²**
- **2017 - +7000 m² - 330 M\$ek**

What's the difference
in design process?

private compare to public

- Small working groups
- Healthcare developer, Property manager and the Projectleader were always tight involved in the process
- The hospital management and the board were continously informed
- Short routes of communication- quick decisions

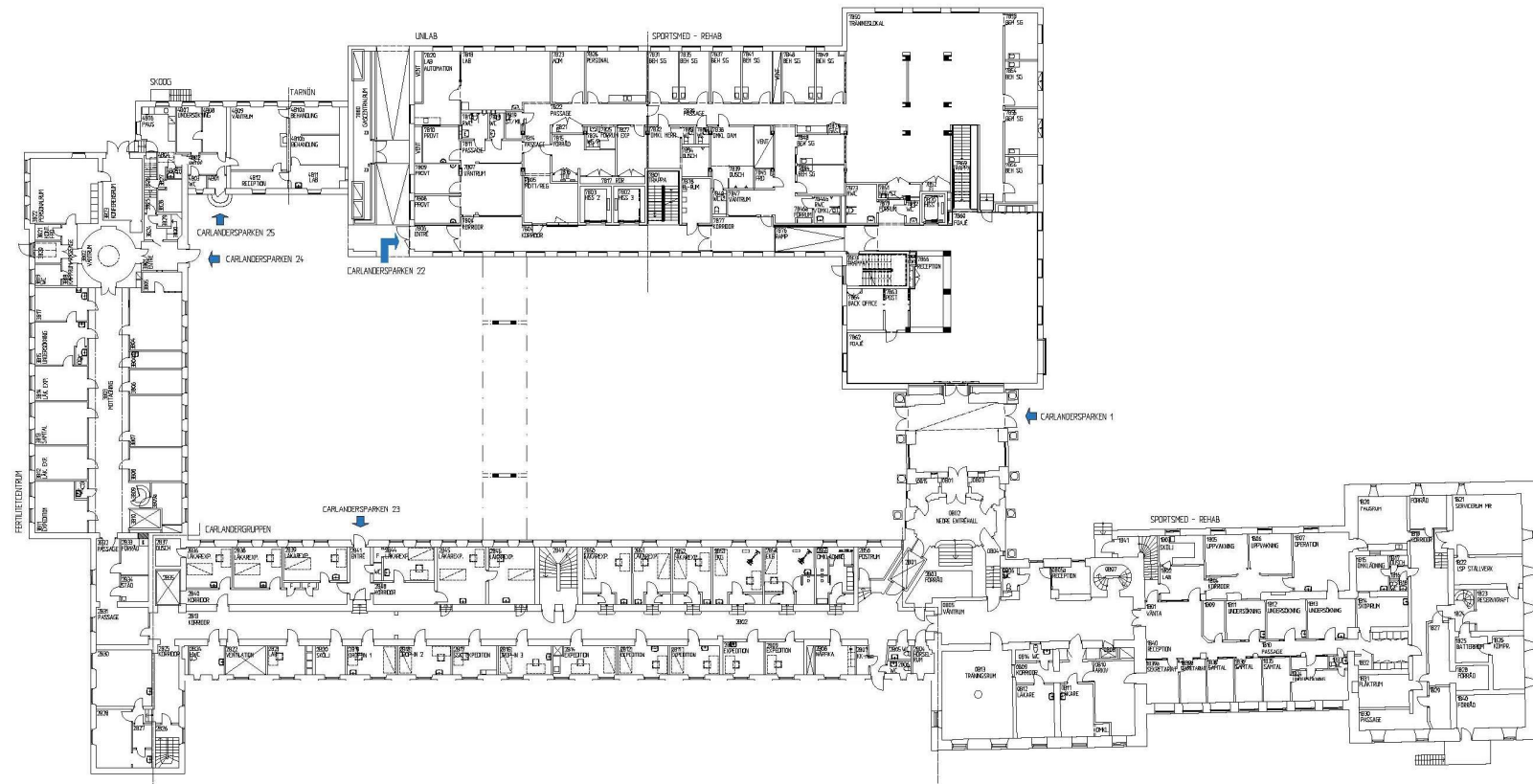


12 m

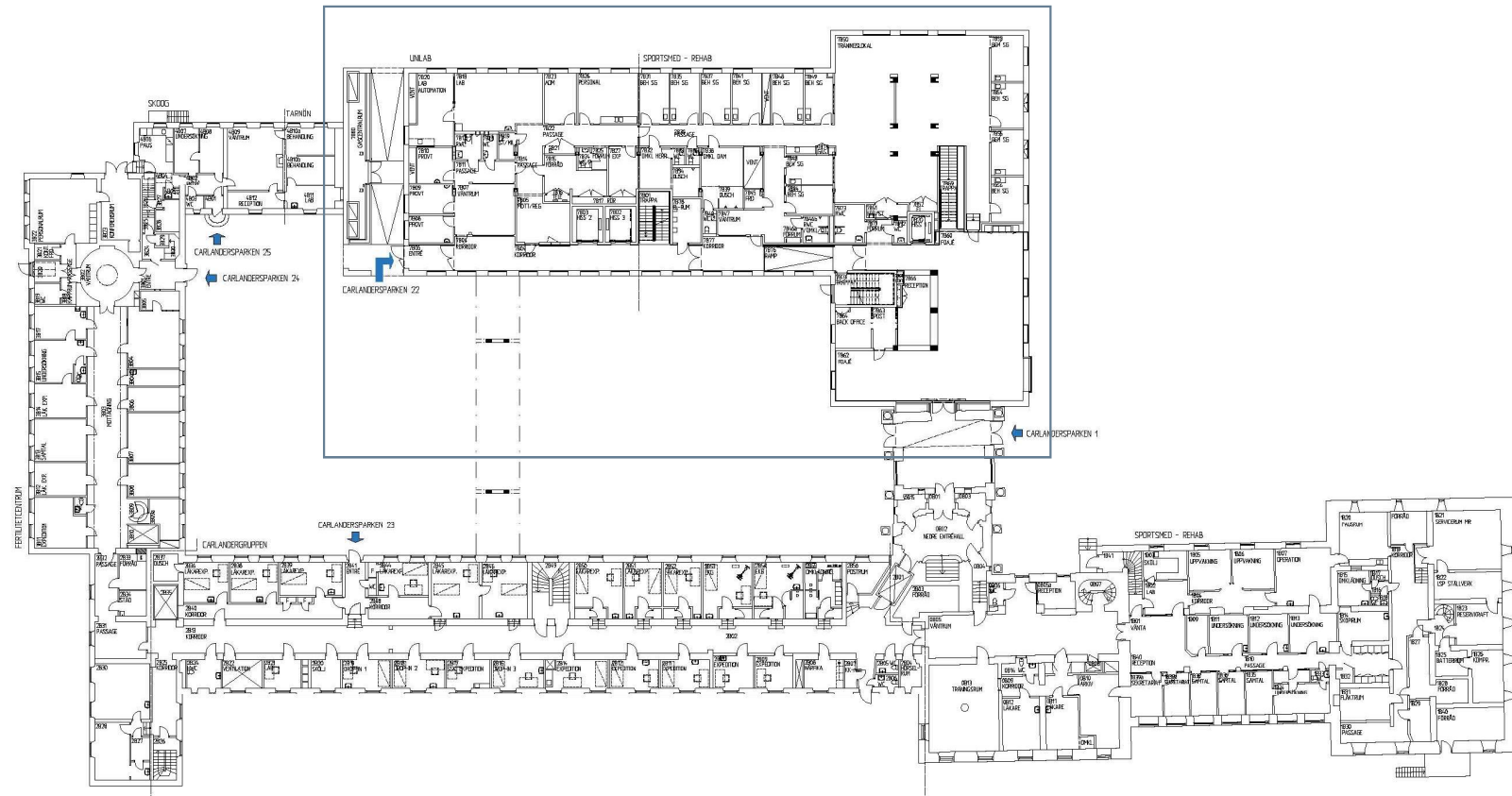


12 m

Ground floor_n



Ground floor

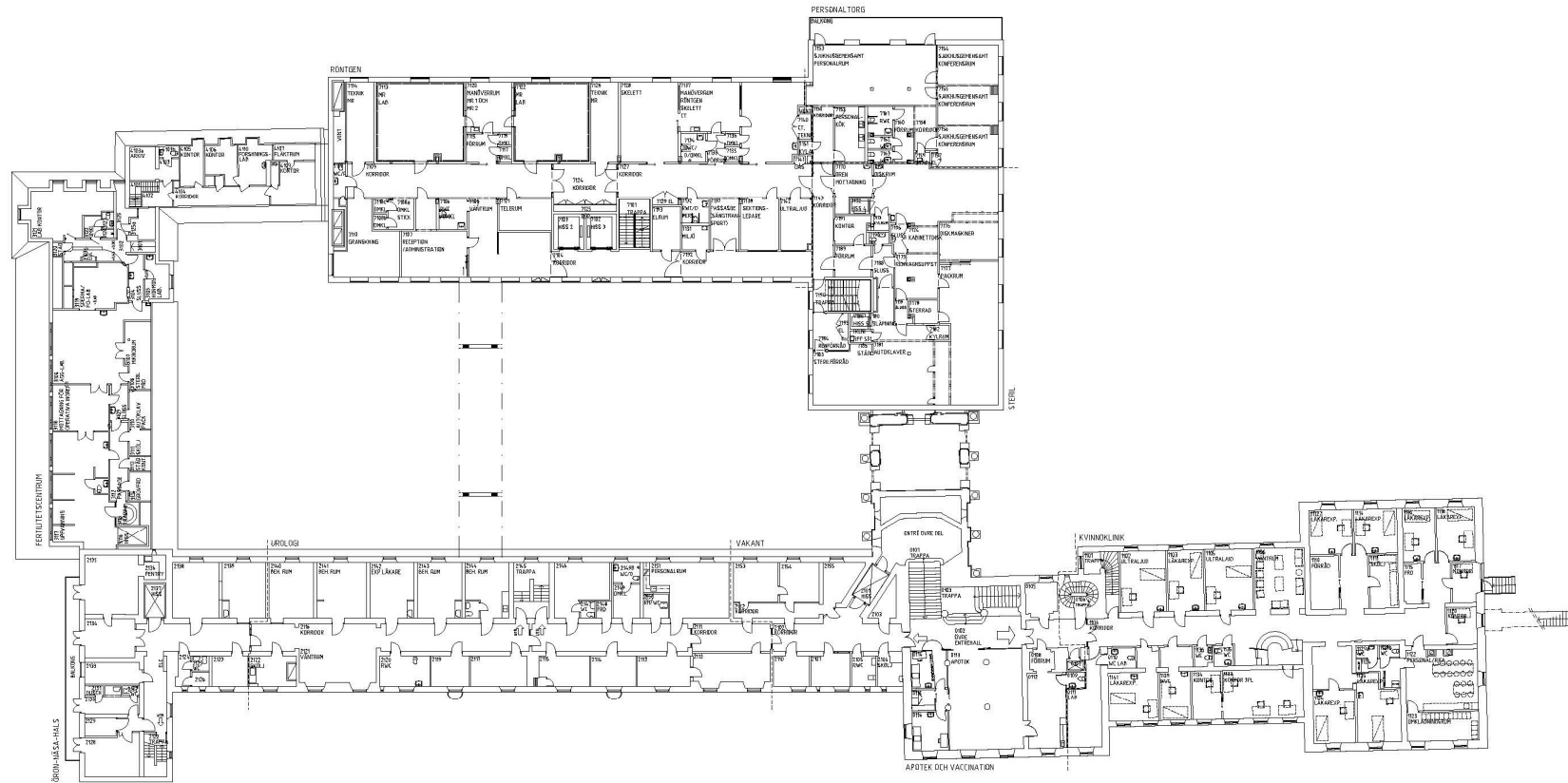


BOTTENVÅNING

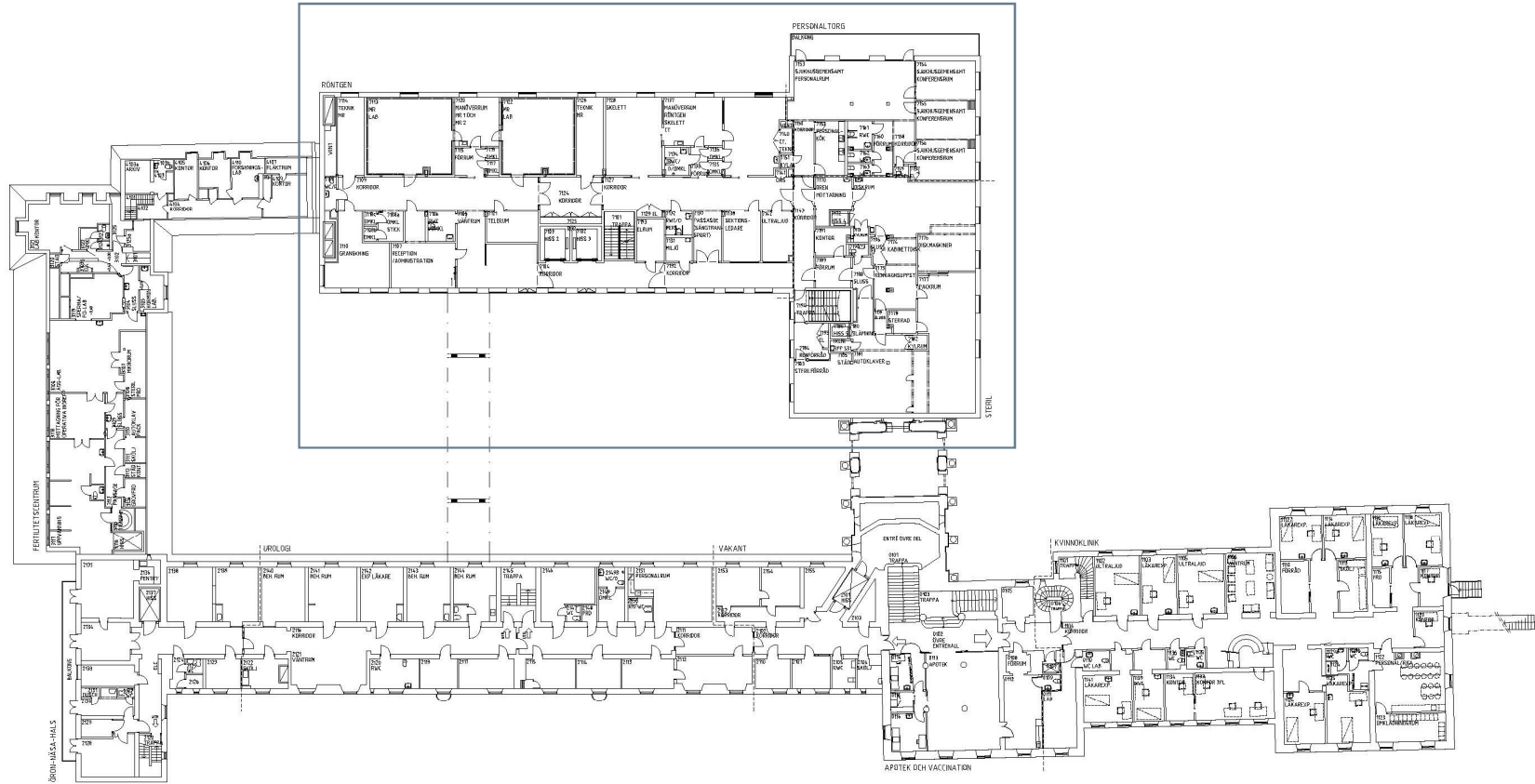


- KOMMUNIKATION
- KUNDTJÄNST
- OPERATION
- PERSONALTORG
- PREOP/UVA
- RESTAURANG
- RÖNTGEN
- SPORTSMED
- STERIL-C
- TEKNIK
- UNILABS

Second floor_n

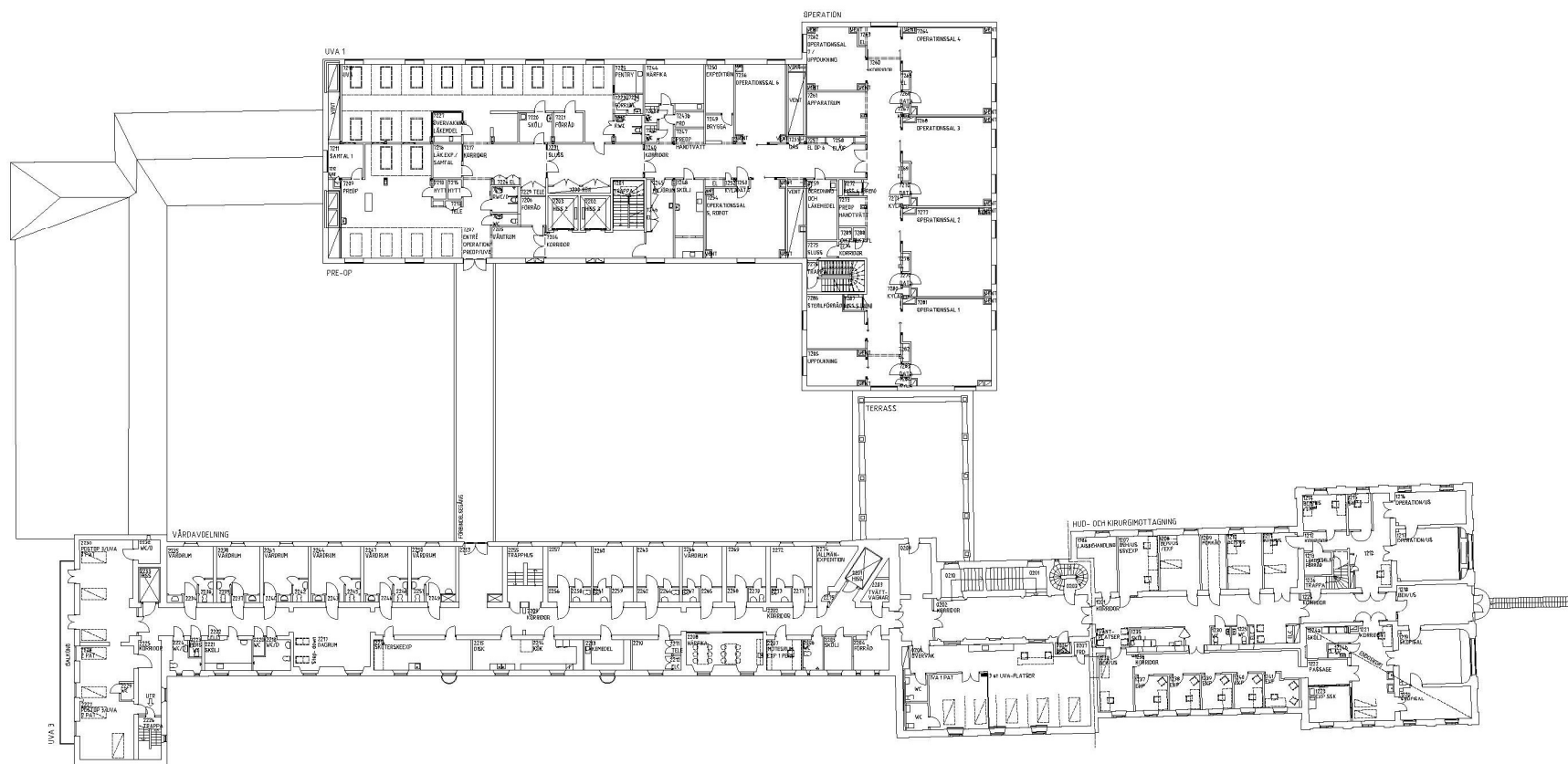


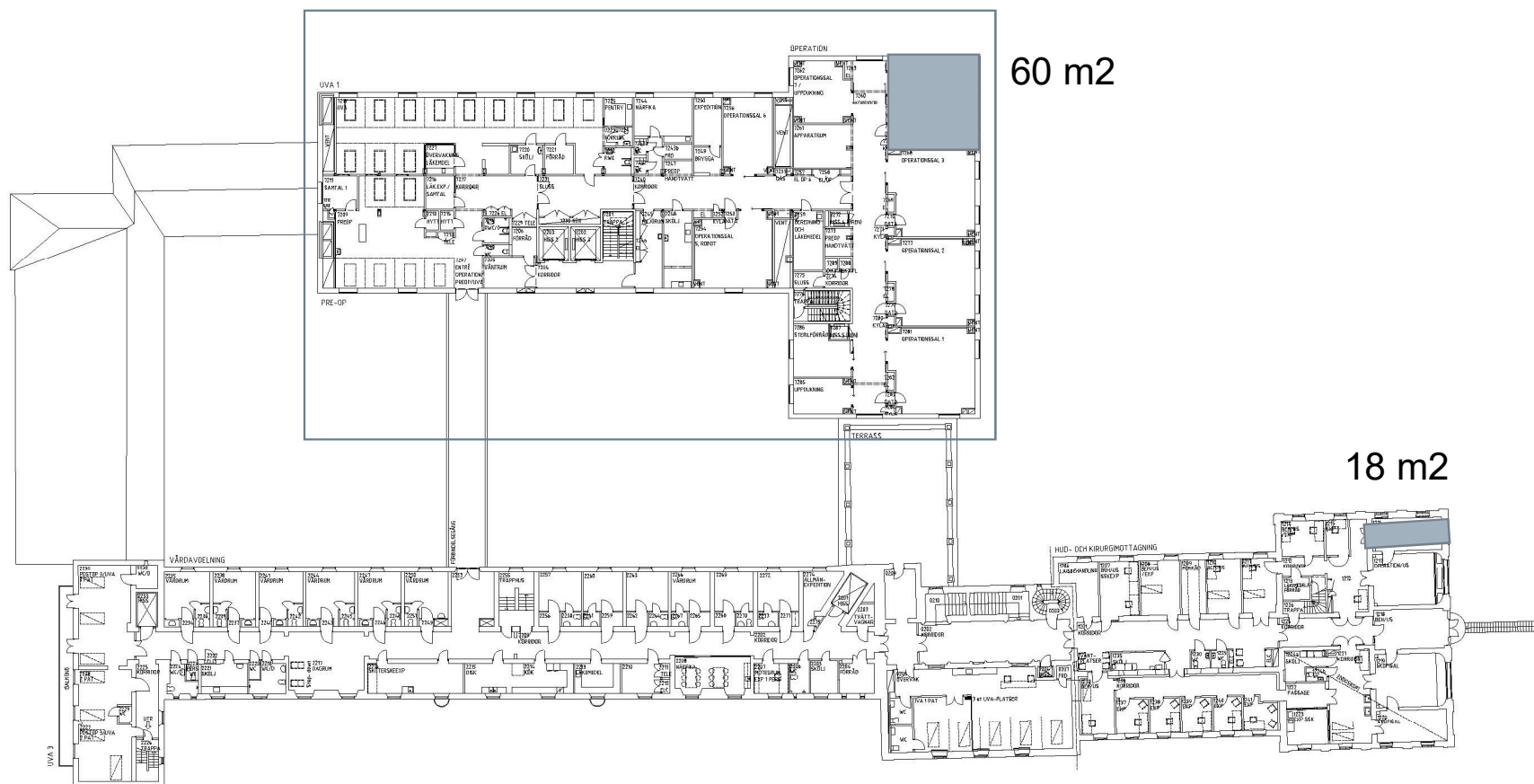
Second floor_n

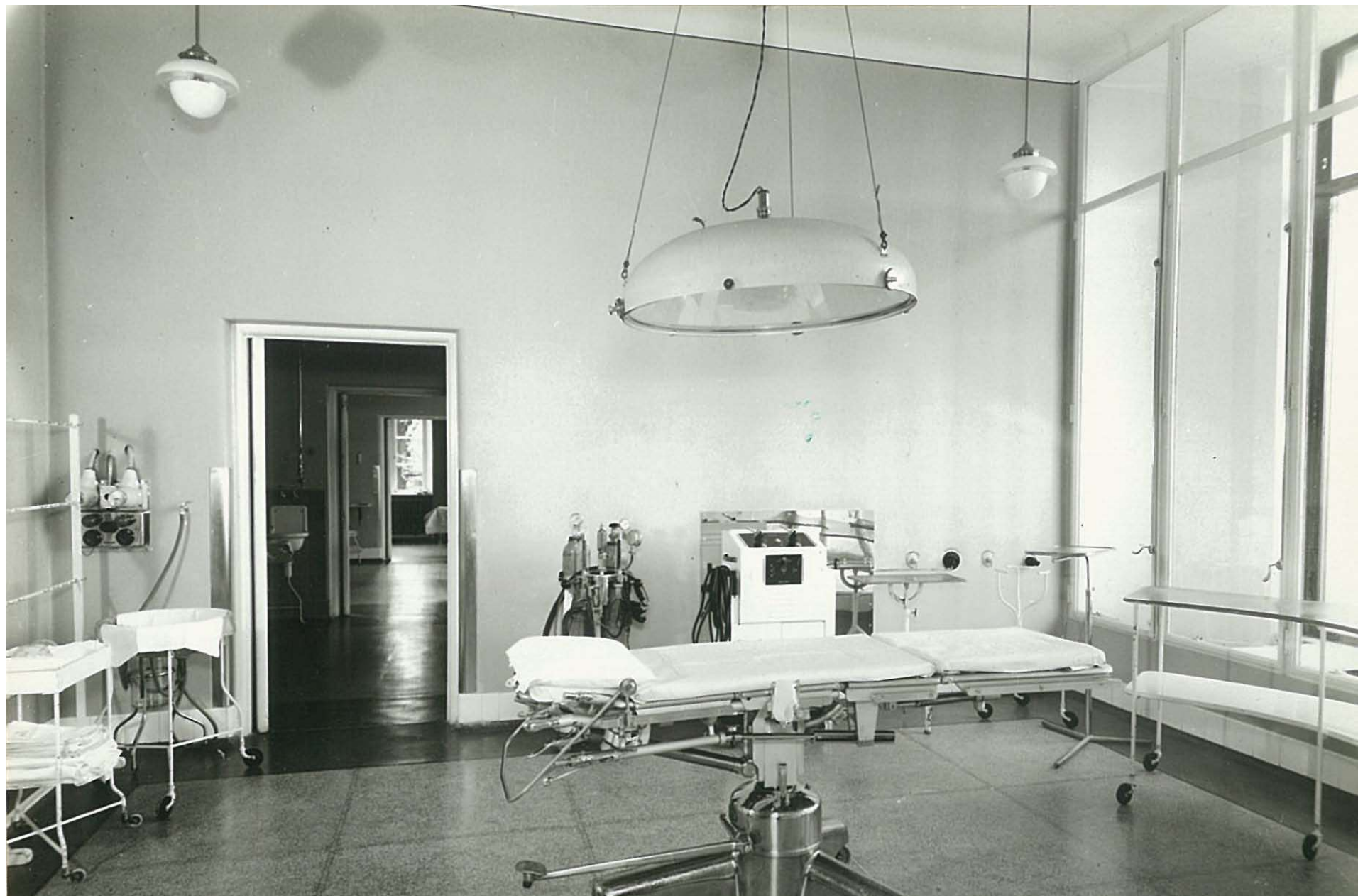


VÅNING 1









VÅNING 2

