
**Improving project delivery through
systematic post-occupancy evaluation:
Swedish examples**

EuHPN 2019 workshop
Basel 2019-05-09

Anders Medin
White arkitekter

www.whitearkitekter.com

white

VÄRNAMO REVISITED

Värnamo Revisited

Återbesök Värnamo Medicinvårdavdelning

Hur blev det?

white

Värnamo

Revisited

- Background Värnamo Hospital
- Question
- Study
- Answer
- Conclusions
- Post-occupancy Evaluation

VÄRNAMO REVISITED

Värnamo sjukhus

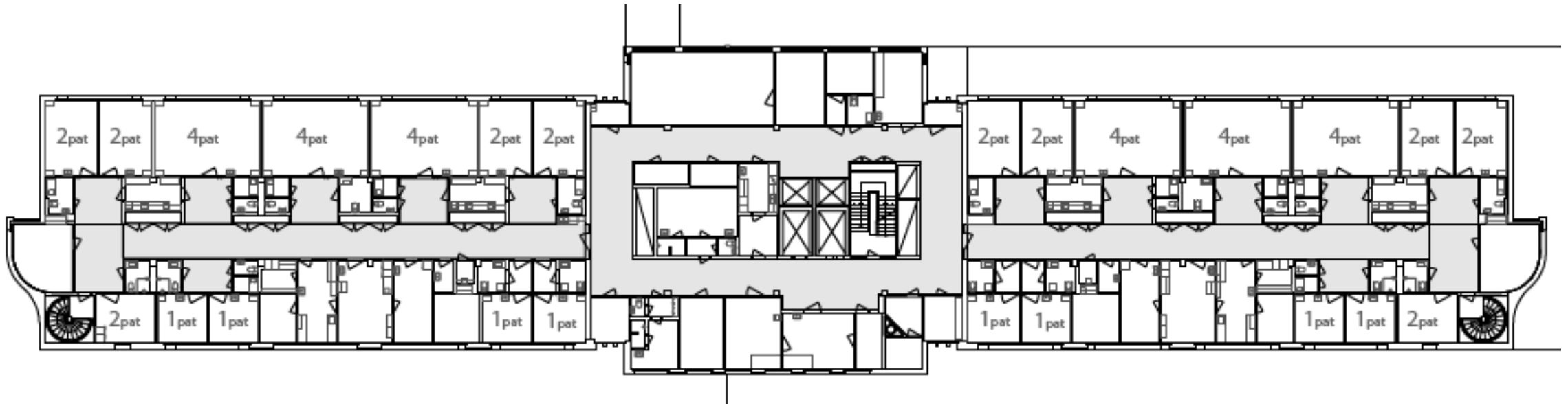
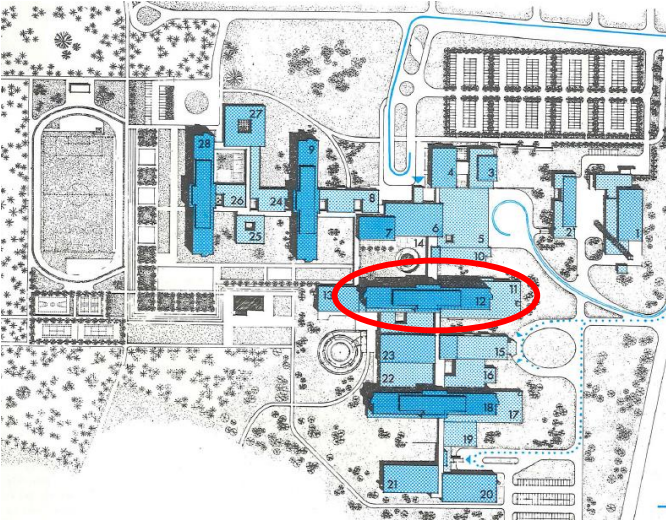


VÄRNAMO REVISITED

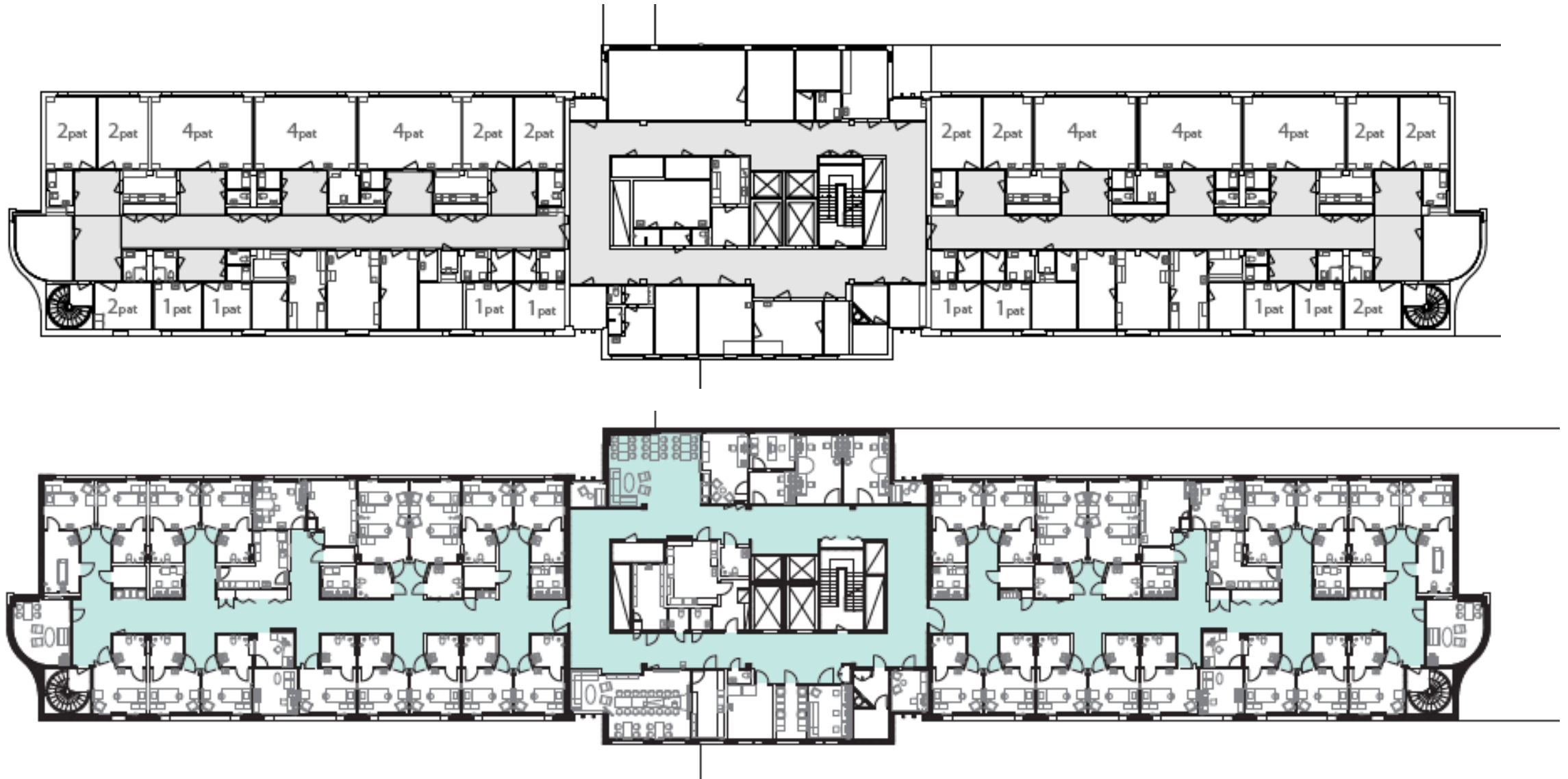
Värnamo sjukhus



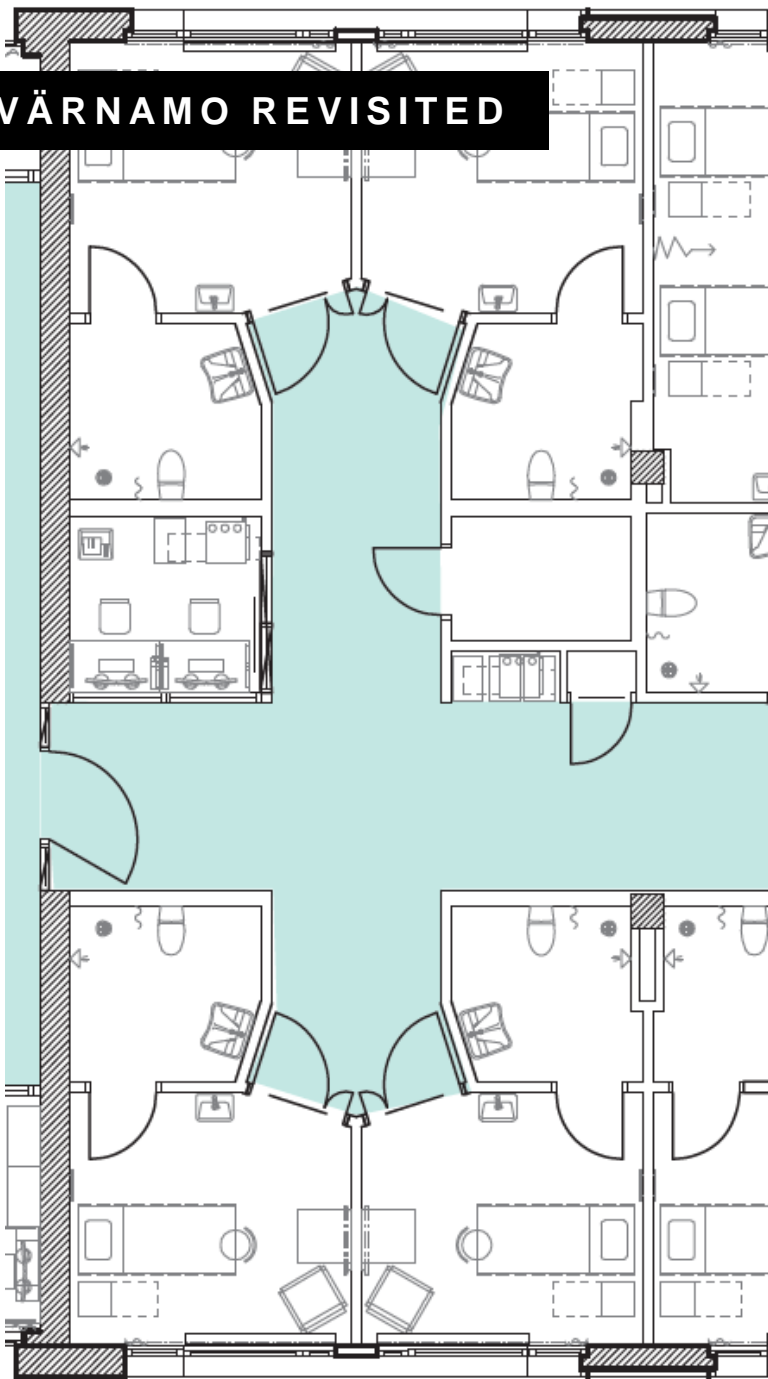
4 in-patient wards Internal medicine



Refurbishment



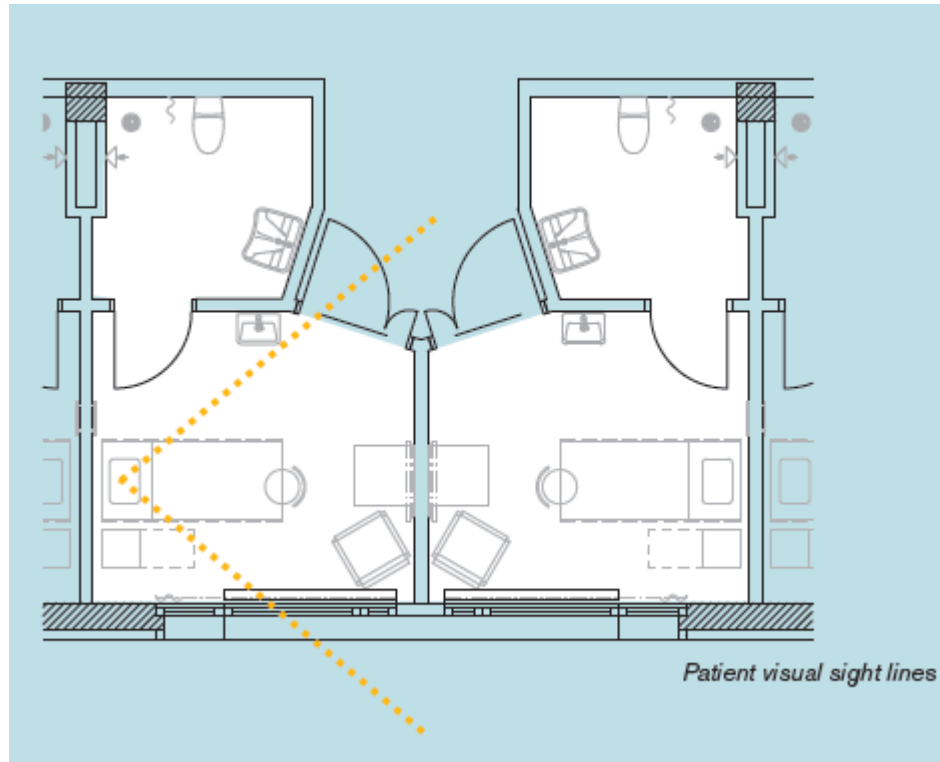
VÄRNAMO REVISITED



Question:

Contact patient room/corridor

Monitoring vs Integrity





*Magnus Carlstrand and
Anna Arias Ortega
carried out the study*

Rooms with visual contact



DOOR OPEN

the person inside the room can both see and hear people standing in the corridor and vice versa.



DOOR CLOSED, BLIND OPEN

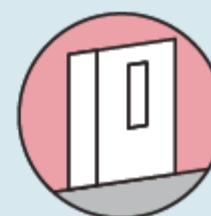
the person inside the room can see people standing in the corridor, and vice versa



DOOR CLOSED, BLIND HALF OPEN

a patient lying or sitting in the bed can see people in the corridor but people in the corridor cannot directly see in. People outside the room need to get close to see the patient.

Rooms without visual contact



DOOR CLOSED, BLIND CLOSED

no visual contact

Observations



DOOR OPEN

the person inside the room can both see and hear people standing in the corridor and vice versa.



DOOR CLOSED, BLIND OPEN

the person inside the room can see people standing in the corridor, and vice versa



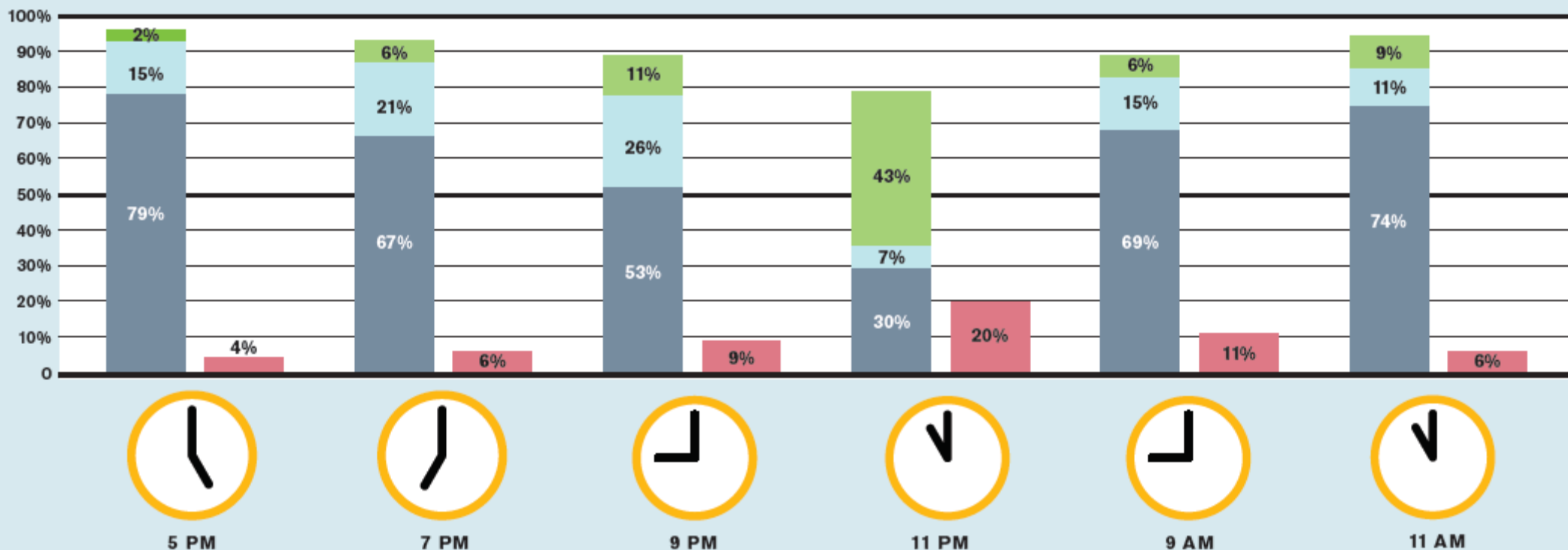
DOOR CLOSED, BLIND HALF OPEN

a patient lying or sitting in the bed can see people in the corridor but people in the corridor cannot directly see in. People outside the room need to get close to see the patient.



DOOR CLOSED, BLIND CLOSED

no visual contact



VÄRNAMO REVISITED

Answer

94%

of wardrooms had
visual contact with the
corridor daytime

80%

of wardrooms had
visual contact with the
corridor at night

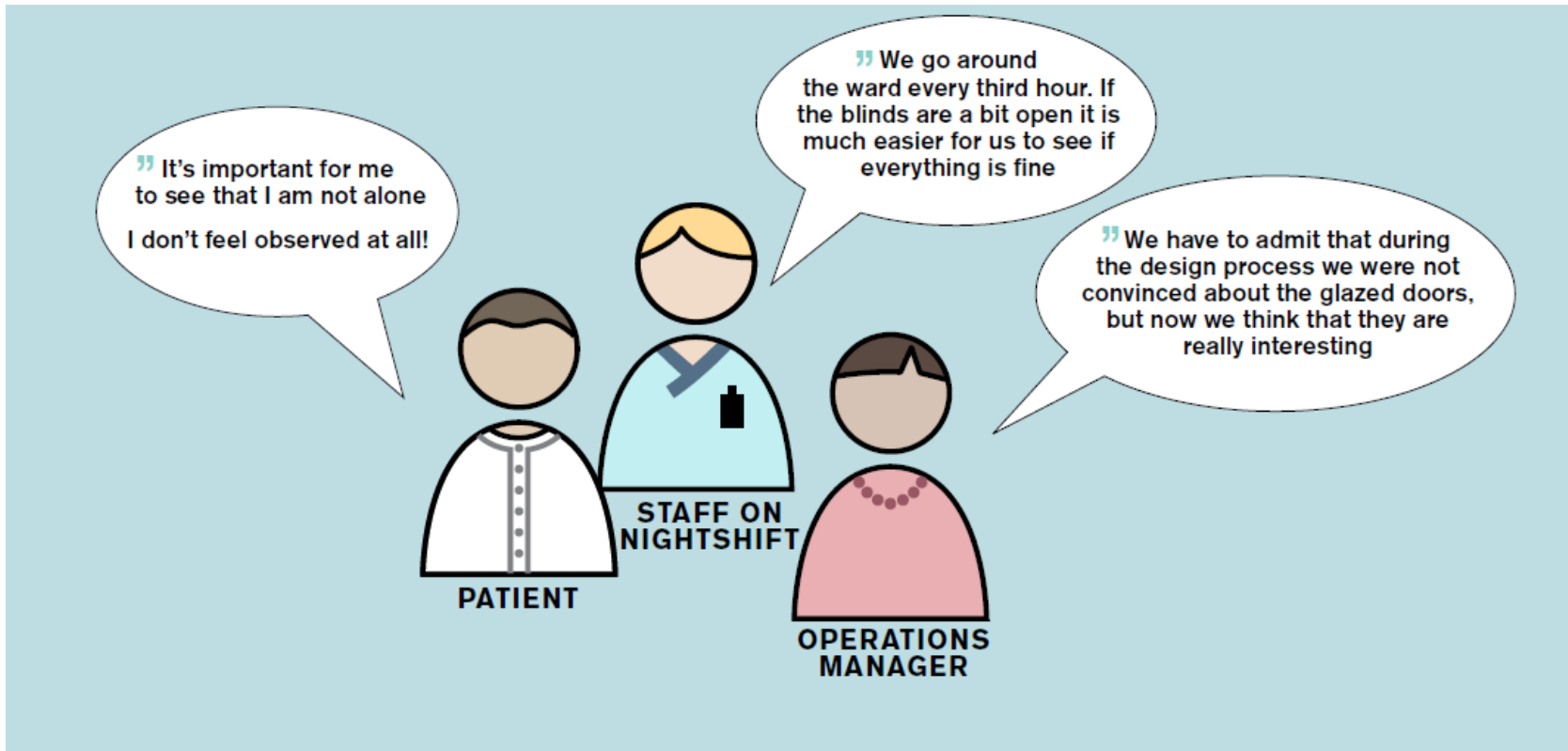


During interviews, both patients and staff expressed their satisfaction with the design of the glazed door with adjustable blinds. Staff on nightshift highlighted that the visual contact facilitated their work as most patients left the blinds partially open, whilst patients appreciated the possibility of contact with their surroundings. During all observations, at least 80% of the rooms had some form of visual contact with the corridor. During daytime 94% of rooms had visual contact with the corridor, with 67% of patients choosing to leave their door open.



Interview

- Glazed doors to patient rooms
- 1 patient rooms
- Common dining/sitting area



Conclusion

- Visual contact is important
- Staff involvement
- Single rooms





Conclusion

- **Health care provider**
functions, routines, philosophy
- **Property**
right investment
- **Architecture**
right design,
usable and flexible



Incentives

- **Define post-occupancy studies in design phase**
- **Systematic evaluation and conclusion**
- **Financing**
- **Co-responsibility**
 - care provider
 - property owner
 - architects

White Research Lab

WRL

- R&D organization
- Practice-based research
- Internal funding

The study was financed through White Research Lab
Our curiosity makes us continuously evaluate and challenge our world. Since the creation of White Arkitekter in 1951, we have challenged the status quo through our in-house research and development to create sustainable architecture — and a better society for all.
White Research Lab is White Arkitekter's R&D organization, which give employees possibilities to carry out practice-based research through internal funding. The present research program focuses on equitable architecture, resource efficiency and informed design

VÄRNAMO REVISITED

Tack!

